



Member's Profiles

Part 3

Member levels



Chair company



Auditor



Vice chair company



Board of directors



General member



Description

Korea Expressway Corporation was established on February 15, 1969 to construct and manage expressways throughout the nation. Koreans can boast one of the world's top ten economies because of the successful completion of such monumental public works as the Gyeongbu (Seoul-Busan) expressway. It is not too much to say that these landmark events have been the primary impetus for the entire Korean economy until today. We plan to increase the length of our expressways to 6,160 km by 2020. When this plan becomes a reality, people will be able to reach an expressway anywhere in the country within thirty minutes. We are now using IT technologies to develop truly "intelligent highways". Just around the corner is the development of "smart highways" that will seamlessly integrate people, automobiles, and roads.

Business Area

1st category

■ **Traffic Management**

- Traffic Signal/Control • Incident Management • Traffic Information • Safe-driving Support
- Traffic Enforcement • Parking Management

□ **Public Transportation**

- Bus Information/ Management System • Public Transportation Information/Management
- Multi Modal Information/Management • Bus Rapid Transit System/Solution
- Pedestrian/Disabled Support System

■ **Electronic Payment**

- Electronic Toll Collection • Electronic Parking Payment • Electronic Fare Payment

■ **Traffic Information Integration/Management**

- Traffic Information Integration • Traffic Information Center Traffic Data Management

□ **Traveler Information**

- Pre/On-Trip Traveler Information Service • Telematics Service

□ **Advanced Vehicle/Highway**

- Safe-driving Vehicle & Highway • Autonomous Driving • Drive Assistant System

□ **Commercial Vehicle Operation**

- Fleet Management System • Hazardous Freight Management • Logistics

□ **Others ()**

2nd category

- Hardware □ Software □ SI □ Consulting ■ **Others**

Ongoing ITS Project or R&D

- Automatic Tunnel Accident Identification System
- Truck Axle Load Estimation Using Weigh-In-Motion Data
- Hi-Pass Only Interchange(Smart IC)
- SMART Hi-Pass System
- ITS Performance Evaluation & Certification

ETC (Patent)

- Apparatus for sensing number of axles in vehicle(1999)
- Apparatus for determining tire width and wheel track of vehicle and method thereof(1999)
- Pass ticket withdrawal control device in ticket issuing unit(1999)
- Ticket issuing unit enabling continuous pass ticket issuing(1999)
- Ticket issuer for preventing double issuing(2000)
- Passport issuing device equipped with plural printing units(2000)
- Device for controlling printer head position of pass checking machine(2000)
- Driving control method of fixed amount pass confirming device(2000)
- Passage receiving apparatus for passage publisher(2000)
- Smart card for toll collection system installed at toll gate(2005)
- Unified remote control apparatus of VMS and environment data and controlling method of the same capable of detecting environmental information of VMS and detecting and controlling trouble of VMS controller(2007)

ITS Product & Technologies



General Information

Company Name: Korea Expressway Corporation / **Website:** www.ex.co.kr
Address: 430, DaewangPangyoro(239-1, Geumto-dong), Sujeong-gu, Seongnam-si, Gyeonggi-do 461 703, Korea

Contacts

Name: Chang Yeop Kim / **Department:** ITS Division
Phone(office): 82-31-779-4035 / **Fax (office):** 82-31-779-4009 / **Phone(mobile):** 82-10-4224-2794
E-mail: cykim@ex.co.kr



Description

DBCS is the company specialized in traffic IT service. It was established in 1996 for efficient operation and enhancement of IT system installed for the convenient and safe use of highways. We are contributing to the development of national industries and improvement of national life through the sustainable development of techniques, fostering of talents and innovation activities, and etc. And we provide total services throughout the traffic IT field from designing the traffic systems of national roads and municipality roads, as well as highways to the establishment, operation, and management of them.

Business Area

1st category

■ Traffic Management

- Traffic Signal/Control • Incident Management • Traffic Information • Safe-driving Support
- Traffic Enforcement • Parking Management

■ Public Transportation

- Bus Information/ Management System • Public Transportation Information/Management
- Multi Modal Information/Management • Bus Rapid Transit System/Solution
- Pedestrian/Disabled Support System

■ Electronic Payment

- Electronic Toll Collection • Electronic Parking Payment • Electronic Fare Payment

■ Traffic Information Integration/Management

- Traffic Information Integration • Traffic Information Center Traffic Data Management

□ Traveler Information

- Pre/On-Trip Traveler Information Service • Telematics Service

□ Advanced Vehicle/Highway

- Safe-driving Vehicle & Highway • Autonomous Driving • Drive Assistant System

■ Commercial Vehicle Operation

- Fleet Management System • Hazardous Freight Management • Logistics

□ Others ()

2nd category

- Hardware ■ Software ■ SI ■ Consulting □ Others ()

Ongoing ITS Project or R&D

Project : HI-PASS SYSTEM (ETCS) / DSRC Traffic data collection system / Maintenance ITS
BIS, BMS SYSTEMS / Image-based Intelligent transportation system / AVI / UTIS / ETC

R&D : Real-time transfer transit system / Multi-functional CCTV / SAMRT Tolling system

ETC (Patent)

Certification

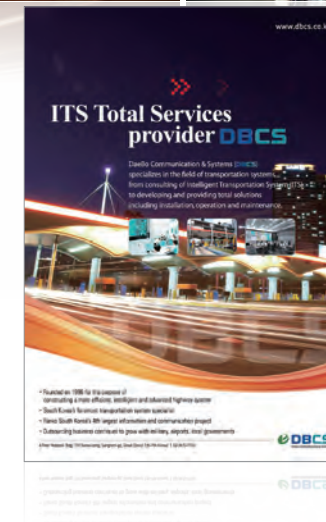
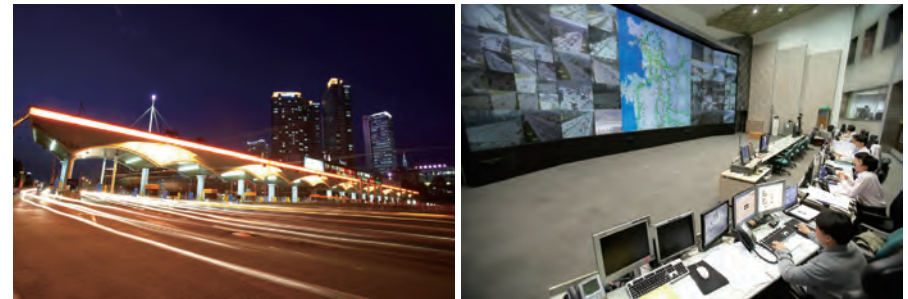
- ISO9001, ISO/IEC 20000
- Qualification as the Outstanding Company for Service Quality (Ministry of Knowledge Economy)

Prize

- Received the Highest Standing Award at the 2008 IT Innovation Awards (Prime Minister's Award)

ITS Product & Technologies

DaeBo Communication&Systems (DBCS) specializes in the field of transportation systems, from consulting of intelligent Transportation System (ITS) to developing and providing total solutions including installation, operation and maintenance



General Information

Company Name: DAEBO COMMUNICATION&SYSTEMS / **Website:** www.dbc.co.kr
Address: 6F, Rosedale B/D, 724, Suseo-dong, Gangnam-gu, Seoul, 135-744, Korea

Contacts

Name: Hyoung-Seob, Kim / **Department:** Transportation Business Team
Phone(office): 82-2-3470-7787 / **Fax (office):** 82-2-3470-7799 / **Phone(mobile):** 82-10-3371-2511
E-mail: Hskim227@dbc.co.kr



Business Area

1st category

- Traffic Management
 - Traffic Signal/Control • Incident Management • Traffic Information • Safe-driving Support
 - Traffic Enforcement • Parking Management
- **Public Transportation**
 - Bus Information/ Management System • Public Transportation Information/Management
 - Multi Modal Information/Management • Bus Rapid Transit System/Solution
 - Pedestrian/Disabled Support System
- **Electronic Payment**
 - Electronic Toll Collection • Electronic Parking Payment • Electronic Fare Payment
- **Traffic Information Integration/Management**
 - Traffic Information Integration • Traffic Information Center Traffic Data Management
- Traveler Information
 - Pre/On-Trip Traveler Information Service • Telematics Service
- Advanced Vehicle/Highway
 - Safe-driving Vehicle & Highway • Autonomous Driving • Drive Assistant System
- Commercial Vehicle Operation
 - Fleet Management System • Hazardous Freight Management • Logistics
- Others ()

2nd category

- **Hardware** ■ **Software** SI Consulting Others ()

Ongoing ITS Project or R&D

- * Construction technology Innovation Project
- * Traffic system efficiency project

ETC (Patent)

1. Intelligence based smart shopping method using RFID
2. Data storage method according to the size of ASN.1 file
3. System and data linkage device which interlocks data using ASN.1, Outgoing data encoding method through heterogeneous system using ASN.1 & data linkage method with heterogeneous system
4. Integrated processing terminal for traffic data using ASN.1, Integrated processing method for traffic data using ASN.1 & Controlling method of integrated processing terminal for traffic data using ASN.1
5. Intelligent energy saving type BIT (Bus Information Terminal)

ITS Product & Technologies

1. BIT (Bus Information Terminal) Total Solution

- Cutting edge functions such as information of bus location, bus service route search, bus stop search, and etc. installed
- Patent technology based energy reduction function installed – Green BIT
- It collects and processes real-time information of location, speed, and etc of running buses and provides relevant information to passengers, drivers, transportation companies, and person in charge in local government.
- Structure of BIS: Bus information center, BIT (Bus Information Terminal), Vehicle terminal, Wireless Data Network, GPS

2. Standard Communication S/W for Traffic System

- Gitsn is the only one to contain the original technology of ASN.1 Toolkit, which is the core standard S/W for ITS info-communication
- Gitsn has joint ownership of the license with the MLTM (Ministry of Land, Transport, and Maritime Affairs)



A. GN-B101 (Independent Type)

B. GN-B201 (Shelter Standing Type)

General Information

Company Name: Gitsn, Inc / **Website:** www.gitsn.com
Address: #811, Woorim e-Biz Center I, 170-5, Guro-Dong, Guro-Gu, Seoul, Korea

Contacts

Name: Kim Cheol Hong / **Department:** R&D
Phone(office): 82-2-2108-2080 / **Fax (office):** 82-2-2108-2085 / **Phone(mobile):** 82-11-212-4182
E-mail: chkim@gitsn.com



Description

Dedicated to clients' growth, LG CNS provides expertise on front-end consulting and IT services for reliable system and network integration, e-business, e-outsourcing and other industry specific solutions. Known as an outstanding IT services provider in China and Southeast Asia, especially for public services systems, LG CNS is servicing global clients in the United States and European countries, with seven subsidiaries and R&D Centers in China, India, US, Europe, Indonesia, Brazil and Japan.

Business Area

1st category

■ Traffic Management

- Traffic Signal/Control • Incident Management • Traffic Information • Safe-driving Support
- Traffic Enforcement • Parking Management

■ Public Transportation

- Bus Information/ Management System • Public Transportation Information/Management
- Multi Modal Information/Management • Bus Rapid Transit System/Solution
- Pedestrian/Disabled Support System

■ Electronic Payment

- Electronic Toll Collection • Electronic Parking Payment • Electronic Fare Payment

■ Traffic Information Integration/Management

- Traffic Information Integration • Traffic Information Center Traffic Data Management

■ Traveler Information

- Pre/On-Trip Traveler Information Service • Telematics Service

□ Advanced Vehicle/Highway

- Safe-driving Vehicle & Highway • Autonomous Driving • Drive Assistant System

□ Commercial Vehicle Operation

- Fleet Management System • Hazardous Freight Management • Logistics

□ Others ()

2nd category

- Hardware ■ Software ■ SI ■ Consulting ■ Others

Ongoing ITS Project or R&D

- Colombia, Bogota SIRCI (The Integrated System of Fare Collection, Fleet Control and User Information & Service)
- Seoul, Bus Information System
- Urban Traffic Information System based on metropolitan traffic data for Hanam city
- Gwanggyo, NewTown u-Transportation system

ITS Product & Technologies

LG CNS's Smart Transportation provides a total service solution, from consulting and architecture design to system implementation and operation, by applying smart technology to transportation to optimize traffic flow and facilitate eco-friendly and safe mobility.

1) Automated Fare Collection

The Automated Fare Collection System built by LG CNS fully automated the entire process of fare collection, from reading and charging the card to analyzing accounting data and generating statistics, enabling fast and reliable management of the public transportation fare charging system.

2) TOPIS(Traffic Operation & Management System)

TOPIS is a total service solution that integrates and fuses different transportation systems and data, thus facilitating scientific and precise management and real time information gathering.

3) Traffic Management System

The Traffic Management System from LG CNS is installed in urban areas, freeways and local roads to respond to the traffic situation in real time. It provides a total service solution, from planning and design, to implementation and maintenance of data gathering/analysis, to monitoring and management systems, that optimize traffic flow and road safety

4) Bus Management & Information System

The Bus Management & Information System provides real-time data on the location of each bus to bus drivers and bus companies, helping maintain the optimum distance between buses and the optimum dispatch time.

It also greatly enhances the passenger experience, as they can receive information on estimated arrival time and bus routes via displays installed at bus stops, or on board the bus; or through the Internet, mobile phones.

5) EV(Elective Vehicle) Charging Infra

LG CNS is the No.1 EV Charging Solution Provider. We have developed the best solutions such as EV Charging Stand, Charging Station, On-board Charging, Billing & Settlement System combined with a Smart Card and supported the Green Car Policy of City.

General Information

Company Name: LG CNS Co., Ltd. / **Website:** www.lgcns.com / transportation.lgcns.com

Address: Prime Tower, 10-1 Hoehyeon-dong 2-ga, Jung-gu, Seoul, Republic of Korea

Phone: 82-2-6363-5000 / **Fax:** 82-2-6363-5118

Contacts

Name: Shin Bongju / **Department:** Smart Transportation Business Group

Phone(office): 82-2-6363-5595 / **Fax (office):** 82-2-6363-6948 / **Phone(mobile):** 82-10-4280-5019

E-mail: jason.shin@lgcns.com



Description

POSCO ICT delivers a comprehensive ICT service, from diagnosis and design of government or enterprise info systems, development of software applications and establishment of hardware and network solutions to operation and maintenance of info systems. Our service scope includes national defense, transportation and manufacture, and we offer systems, top of the line. We build the right system optimized for the business environment and needs; existing systems are integrated into the new one.

Business Area

1st category

■ Traffic Management

- Traffic Signal/Control • Incident Management • Traffic Information • Safe-driving Support
- Traffic Enforcement • Parking Management

■ Public Transportation

- Bus Information/ Management System • Public Transportation Information/Management
- Multi Modal Information/Management • Bus Rapid Transit System/Solution
- Pedestrian/Disabled Support System

■ Electronic Payment

- Electronic Toll Collection • Electronic Parking Payment • Electronic Fare Payment

■ Traffic Information Integration/Management

- Traffic Information Integration • Traffic Information Center Traffic Data Management

□ Traveler Information

- Pre/On-Trip Traveler Information Service • Telematics Service

□ Advanced Vehicle/Highway

- Safe-driving Vehicle & Highway • Autonomous Driving • Drive Assistant System

□ Commercial Vehicle Operation

- Fleet Management System • Hazardous Freight Management • Logistics

□ Others ()

2nd category

- Hardware ■ Software ■ SI ■ Consulting □ Others ()

Ongoing ITS Project or R&D

- Construction project of Changwon ~ Busan private freeways ETCS/TCS
- Construction project of Chung-ju U-traffic System
- Facility management project of San-sung private freeways Tunnel in Busan
- Korea Expressway Corporation : hi-pass system maintenance
- Survey of DSRC traffic information on the ITS section
- Project of Russia ITS feasibility Study
- Proposal of Turkey North Marmara Freeway construction project
- Proposal of Uzbekistan Bus Service Control System project

ITS Product & Technologies

ETCS (Electronic Toll Collection System)

TCS (Toll Collection System),

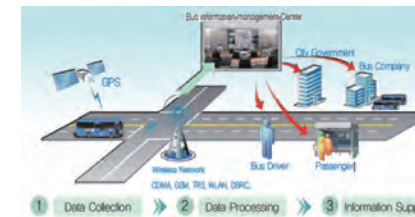
DSRC (Dedicated Short Range Communication)

ATMS (Advanced Transportation Management System)

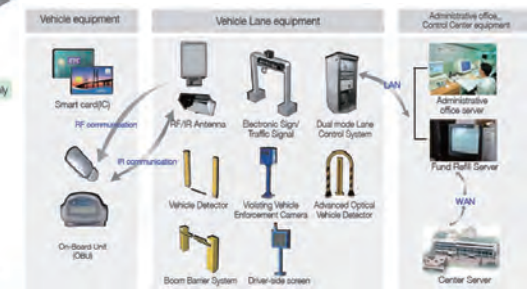
BIS (Bus Information System)

BMS (Bus Management System)

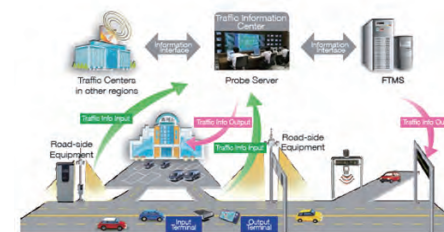
1) BIS (Bus Information System)



2) ETCS (Electronic Toll Collection System)



3) DSRC (Dedicated short Range Communication traffic Information System)



General Information

Company Name: POSCO ICT / **Website:** www.poscoict.com

Address: POSCO ICT Smart Tower, 622, Sampoeng-dong, Bundang-gu, Seongnam-city Gyeonggi-do, KOREA ZIP:463-400

Contacts

Name: Kim, yong-hyun / **Department:** Transportation Industry Sales Team

Phone(office): 82-31-723-2585 / **Fax (office):** 82-31-723-2111 / **Phone(mobile):** 82-10-5419-0145

E-mail: yhkim@poscoict.com



Description

Samsung SDS ITS applies the latest technologies in electronics, information & telecommunication to existing transportation infrastructure and components such as road and vehicles to operate transportation facilities efficiently and provide useful information to users.

Business Area

1st category

■ Traffic Management

- Traffic Signal/Control • Incident Management • Traffic Information • Safe-driving Support
- Traffic Enforcement • Parking Management

■ Public Transportation

- Bus Information/ Management System • Public Transportation Information/Management
- Multi Modal Information/Management • Bus Rapid Transit System/Solution
- Pedestrian/Disabled Support System

■ Electronic Payment

- Electronic Toll Collection • Electronic Parking Payment • Electronic Fare Payment

■ Traffic Information Integration/Management

- Traffic Information Integration • Traffic Information Center Traffic Data Management

■ Traveler Information

- Pre/On-Trip Traveler Information Service • Telematics Service

■ Advanced Vehicle/Highway

- Safe-driving Vehicle & Highway • Autonomous Driving • Drive Assistant System

■ Commercial Vehicle Operation

- Fleet Management System • Hazardous Freight Management • Logistics

Others ()

2nd category

■ Hardware ■ Software ■ SI ■ Consulting ■ Others

Ongoing ITS Project or R&D

- Bus Information & Management System in most major cities
- Intelligent Transportation System in most metropolitan areas
- Electronic Toll Collection/Toll Collection System in most major highways
- Urban Traffic Management systems in major cities

ITS Product & Technologies

Samsung SDS, premier ICT service provider, leveraged its technical and integration expertise to develop essential cutting-edge technology embedded solutions to improve transport. SDS has approached various transportation related issues using its premier technology leader with expertise in many relevant fields and right partnerships. With its own suite of product lines and technology, SDS has been in this business for over 25 years to assist the public with own approach and solution roadmap



General Information

Company Name: Samsung SDS / **Website:** www.sds.samsung.com

Address: 707-19, Yoksam 2-dong, Gangnam-gu, Seoul, Korea, 135-918

Contacts

Name: Charles Kyungchul Lee / **Department:** Global Business Development Team

Phone(office): 1-201-229-4456 / **Fax (office):** 1-201-229-4117 / **Phone(mobile):** 1-201-870-2947

E-mail: dalma@samsung.com



Description

We manufacture and sell the optimum ETC Devices for the ETC system on the road by applying communication network technologies and ITS-based solutions. We also provide various real-time traffic information to drivers for safe and convenient driving by applying road-only communication technology(WAVE), Dedicated Short Range Communication (DSRC), and 18Ghz wireless video transmission technology.

Business Area

1st category

■ **Traffic Management**

- Traffic Signal/Control • Incident Management • Traffic Information • Safe-driving Support
- Traffic Enforcement • Parking Management

■ **Public Transportation**

- Bus Information/ Management System • Public Transportation Information/Management
- Multi Modal Information/Management • Bus Rapid Transit System/Solution
- Pedestrian/Disabled Support System

■ **Electronic Payment**

- Electronic Toll Collection • Electronic Parking Payment • Electronic Fare Payment

■ **Traffic Information Integration/Management**

- Traffic Information Integration • Traffic Information Center Traffic Data Management

Traveler Information

- Pre/On-Trip Traveler Information Service • Telematics Service

Advanced Vehicle/Highway

- Safe-driving Vehicle & Highway • Autonomous Driving • Drive Assistant System

Commercial Vehicle Operation

- Fleet Management System • Hazardous Freight Management • Logistics

Others ()

2nd category

- **Hardware** ■ **Software** ■ **SI** Consulting Others ()

Ongoing ITS Project or R&D

Vehicle IT Solutions

Samsug SNS provides safety, information, and eco-friendly driving technologies. The basis of these technologies is the interaction among the roadway, vehicle and driver which is facilitated through new technologies.

Main Business

- ETC Devices GPS and Traffic Information Displays(Solar Power Charge Type and Others)
- Vehicle Status detect Devices (OBD2+ETC Integrated, Smart Phone Linked and Others)
- Vehicle IT (Room Mirror+ETC, AV+ETC and Others)
- ITS Systems (DSRC, ATMS and Others)

Key Business Showings

- Mutual Development of ETC OBU with multi-purpose EC mirror display
- Next Generation Communication "WAVE" of co-development

ETC (Patent)

- 10-2010-0030984: Using DSRC system and method for providing vehicle location information.(The Korean intellectual property office)
- 10-2008-0081924: Management method and apparatus of the ETC system.(The Korean intellectual property office)

Prize

- 2011 Korea First Brand Award
- reddot design award winner 2010 : SEN-230(navigation system)

ITS Product & Technologies

We develop, manufacture, and sell various ITS systems that make roadway traffic systems intelligent. Road infrastructure, vehicles, light systems, and other parts of the traffic network can all be integrated into an innovative network. We also make intelligent transportation devices that promote safer driving and provide added convenience to the user.



General Information

Company Name: SAMSUNG SNS / **Website:** www.samsungsns.com
Address: 448-11, Seongnae 3dong, Gangdong-gu, Seoul, Korea (SAMSUNG SNS CO.,LTD)

Contacts

Name: Kwonseok Kang / **Department:** Traffic Solution Group Traffic Solution Business Part
Phone(office): 82-2-2225-6926 / **Fax (office):** 82-2-2225-6085 / **Phone(mobile):** 82-10-9017-9095
E-mail: kwon.kang@samsung.com



Business Area

1st category

■ Traffic Management

- Traffic Signal/Control • Incident Management • Traffic Information • Safe-driving Support
- Traffic Enforcement • Parking Management

■ Public Transportation

- Bus Information/ Management System • Public Transportation Information/Management
- Multi Modal Information/Management • Bus Rapid Transit System/Solution
- Pedestrian/Disabled Support System

□ Electronic Payment

- Electronic Toll Collection • Electronic Parking Payment • Electronic Fare Payment

■ Traffic Information Integration/Management

- Traffic Information Integration • Traffic Information Center Traffic Data Management

□ Traveler Information

- Pre/On-Trip Traveler Information Service • Telematics Service

□ Advanced Vehicle/Highway

- Safe-driving Vehicle & Highway • Autonomous Driving • Drive Assistant System

□ Commercial Vehicle Operation

- Fleet Management System • Hazardous Freight Management • Logistics

□ Others ()

2nd category

- Hardware ■ Software ■ SI □ Consulting □ Others ()

Ongoing ITS Project or R&D

- Bimodal tram operating system project. (From 2007)
(With KRRI, Korea Railroad Research Institute.)

ETC (Patent)

- Traffic signal control system (No : 0524112)
- Divergence control and methods for Bimodal Tram (No : 10-1039421)

ITS Product & Technologies

| Technologies |

- Real-time Traffic signal technology controlled by traffic flow
- Detect the violation of the signal/overspeeding, and recognize the plate number automatically
- Total Traffic control management technology
- Car operating management technology (Car status, video management, wireless comm.)



Bus Information Terminal



Driver Information terminal



Video Vehicle Incident Detection System



Encoding/Decoding Server

General Information

Company Name: GIL Information Systems Co.,Ltd / **Website:** www.gilis.co.kr
Address: 3F 3Dong 1Danji, Pangyo Seven Venture Valley , #625, Sampyeong-Dong,
 Bundang-Gu, Seongnam-City, Gyeonggi-Do, 463-400 Korea

Contacts

Name: Lee, Yu Jin / **Department:** Strategy Planning Department
Phone(office): 82-31-622-3740 / **Fax (office):** 82-31-622-3749 / **Phone(mobile):** 82-10-5382-5701
E-mail: Vincent@gilis.co.kr



Business Area

1st category

■ Traffic Management

- Traffic Signal/Control • Incident Management • Traffic Information • Safe-driving Support
- Traffic Enforcement • Parking Management

□ Public Transportation

- Bus Information/ Management System • Public Transportation Information/Management
- Multi Modal Information/Management • Bus Rapid Transit System/Solution
- Pedestrian/Disabled Support System

□ Electronic Payment

- Electronic Toll Collection • Electronic Parking Payment • Electronic Fare Payment

■ Traffic Information Integration/Management

- Traffic Information Integration • Traffic Information Center Traffic Data Management

□ Traveler Information

- Pre/On-Trip Traveler Information Service • Telematics Service

□ Advanced Vehicle/Highway

- Safe-driving Vehicle & Highway • Autonomous Driving • Drive Assistant System

■ Commercial Vehicle Operation

- Fleet Management System • Hazardous Freight Management • Logistics

□ Others ()

2nd category

- Hardware ■ Software ■ SI □ Consulting □ Others ()

Ongoing ITS Project or R&D

ATS-WIM & ATS-AVC

ATS-WIM is an accurate and reliable High-speed Weigh-in-Motion system and ATS-AVC is a high quality Automatic Vehicle Classification system.

ITS Product & Technologies

Traffic management, Construction maintenance management, Construction measurement



General Information

Company Name: Mapi Soft Inc / **Website:** www.mapsi.com
Address: B-3114 Kolon Tripolis 210 Gungok-dong Bundang-gu Seongnam-si Gyeonggi-do 463-943 Korea

Contacts

Name: Wonyoung, Jo / **Department:**
Phone(office): 070-8676-3155 / **Fax (office):** 070-8610-3000 / **Phone(mobile):** 010-2724-8473
E-mail: jo@mapsi.com



Description

I-Controls is one of the best SI companies in Korea. Its business areas are IBS(Intelligent Building System), Home Network System, SI for Social Infrastructure(SOC), and LED. SI business for social infrastructure includes ITS, Railway E&M, and Container terminal automation.

Business Area

1st category

■ Traffic Management

- Traffic Signal/Control • Incident Management • Traffic Information • Safe-driving Support
- Traffic Enforcement • Parking Management

■ Public Transportation

- Bus Information/ Management System • Public Transportation Information/Management
- Multi Modal Information/Management • Bus Rapid Transit System/Solution
- Pedestrian/Disabled Support System

■ Electronic Payment

- Electronic Toll Collection • Electronic Parking Payment • Electronic Fare Payment

■ Traffic Information Integration/Management

- Traffic Information Integration • Traffic Information Center Traffic Data Management

□ Traveler Information

- Pre/On-Trip Traveler Information Service • Telematics Service

□ Advanced Vehicle/Highway

- Safe-driving Vehicle & Highway • Autonomous Driving • Drive Assistant System

□ Commercial Vehicle Operation

- Fleet Management System • Hazardous Freight Management • Logistics

□ Others ()

2nd category

- Hardware ■ Software ■ SI ■ Consulting □ Others ()

Ongoing ITS Project or R&D

1. ITS and Tunnel TTMS/TGMS Project for Suseok-Hopyeong Expressway in Progress
2. Tunnel TGMS Project for Jinju-Masan(Sanin Tunnel) Expressway in Progress
3. Tunnel TTMS Project for Jeonju-Gwangyang Expressway in Progress
4. ITS Project for Changwon-Busan Expressway in Progress
5. ITS and Tunnel TTMS/TGMS Project for Seoul-Chuncheon Expressway in Progress
6. ITS and Tunnel TTMS/TGMS Project for Daegu-Busan Expressway in Progress

ETC (Patent)

1. Korean Civil/environmental engineer 2011(Traffic infra system division)
2. Kyeongin daily's 2010 winner of systems award, Information/telecommunication system
3. Constructed integrated connected system of FTMS/TTMS/TGMS for the first time in Korea.
4. Execution experience in One Cycle such as highway ITS field planning, design, construction, maintenance and so on.

ITS Product & Technologies

1. **FTMS**(Freeway Traffic Management System) : The system performs various functions including real-time acquisition and processing of traffic information, processing and analysis of information creation, provision of processed information, efficient center operation, and facility maintenance for various field equipments.
2. **TTMS**(Tunnel Traffic Management System) : Tunnel traffic management system is for quick and proper handling through accident detection and emergency broadcast in case of emergency as well as collection of real-time traffic information for inside the tunnel in normal situations.
3. **TGMS**(Tunnel Group Management System) : Tunnel group management system for saving the cost for tunnel operation and maintenance and for maximizing the efficiency of management by managing multiple tunnels for one management office.

- FTMS -



- TTMS/TGMS -



- Etc -



General Information

Company Name: I•CONTROLS / **Website:** www.icontrols.co.kr
Address: 11 Jeongja-Dong Bundang-Gu, Seongnam, Gyeonggi-Do, 463-859, Korea

Contacts

Name: Min Gyoung-Yong / **Department:** SOC Division
Phone(office): 82-31-785-1836 / **Fax (office):** 82-31-785-1836 / **Phone(mobile):** 82-10-7749-0500
E-mail: mky7807@icontrols.co.kr



Business Area

1st category

■ Traffic Management

- Traffic Signal/Control • Incident Management • Traffic Information • Safe-driving Support
- Traffic Enforcement • Parking Management

Public Transportation

- Bus Information/ Management System • Public Transportation Information/Management
- Multi Modal Information/Management • Bus Rapid Transit System/Solution
- Pedestrian/Disabled Support System

Electronic Payment

- Electronic Toll Collection • Electronic Parking Payment • Electronic Fare Payment

■ Traffic Information Integration/Management

- Traffic Information Integration • Traffic Information Center Traffic Data Management

Traveler Information

- Pre/On-Trip Traveler Information Service • Telematics Service

Advanced Vehicle/Highway

- Safe-driving Vehicle & Highway • Autonomous Driving • Drive Assistant System

Commercial Vehicle Operation

- Fleet Management System • Hazardous Freight Management • Logistics

Others ()

2nd category

- Hardware ■ Software SI ■ Consulting Others ()

Ongoing ITS Project or R&D

1. 31 WIM systems for Korea Expressway Corporation
2. 10 WIM systems for Ministry Of Land, Transportation and Maritime Affairs

ETC (Patent)

1. 6 patents for WIM technology ,
2. 1 Patent for Automatic Vehicle Counter

ITS Product & Technologies

We, KTS is a manufacturer and supplier in field of Slow Speed WIM, High Speed WIM, Automatic Vehicle Counter, Multi Truck Scale based on Korea.



General Information

Company Name: Korea Traffic Systems Co., Ltd / **Website:** www.ktswim.com
Address: 23-13, Seokwoo Dong, Whaseong City, Kyunggi Do, Republic Of Korea

Contacts

Name: Mr. Yong- Han Cho / **Department:** International Biz Dept
Phone(office): 82-31-8105-2731 ~ 5 / **Fax (office):** 82-31-8015-2736 / **Phone(mobile):** 82-10-2697-7388
E-mail: seikero@hanmail.net



Description

ETRI(Electronics and Telecommunications Research Institute) is the largest government funded research institute in Korea, which strives to advance science by means of formulating innovative ideas; developing new techniques; and training professional individuals in the area of information telecommunications to ultimately enhance social and economical aspects of the modern society.

Business Area

1st category

- Traffic Management
 - Traffic Signal/Control • Incident Management • Traffic Information • Safe-driving Support
 - Traffic Enforcement • Parking Management
- Public Transportation
 - Bus Information/ Management System • Public Transportation Information/Management
 - Multi Modal Information/Management • Bus Rapid Transit System/Solution
 - Pedestrian/Disabled Support System
- Electronic Payment
 - Electronic Toll Collection • Electronic Parking Payment • Electronic Fare Payment
- Traffic Information Integration/Management
 - Traffic Information Integration • Traffic Information Center Traffic Data Management
- Traveler Information
 - Pre/On-Trip Traveler Information Service • Telematics Service
- Advanced Vehicle/Highway**
 - Safe-driving Vehicle & Highway • Autonomous Driving • Drive Assistant System
- Commercial Vehicle Operation
 - Fleet Management System • Hazardous Freight Management • Logistics
- Others ()

2nd category

- Hardware** **Software** SI Consulting Others ()

Ongoing ITS Project or R&D

- SMART Highway

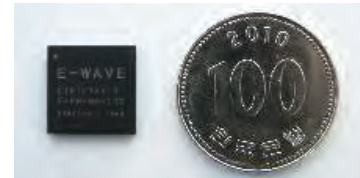
ETC (Patent)

- WAVE Handover technology

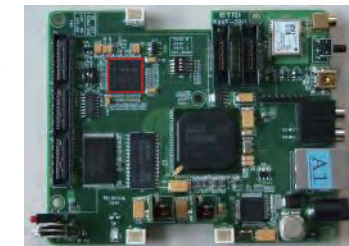
ITS Product & Technologies

- Development of WAVE chip
- Development of WAVE Communication module prototype
- Development of WAVE Software
- Development & Research on advanced vehicular communication technologies (Physical/MAC/Networking/Application Layers)

WAVE chip



WAVE Communication module prototype



General Information

Company Name: ETRI / **Website:** www.etri.re.kr
Address: 218 Gajeong-ro, Yuseong-gu, Daejeon, 305-700, KOREA

Contacts

Name: Hyun Seo Oh / **Department:** IT Convergence Technology Research laboratory
Phone(office): 82-42-860-5659 / **Fax (office):** 82-42-860-1085 / **Phone(mobile):** 82-10-7175-3582
E-mail: hsoh5@etri.re.kr



Business Area

1st category

■ Traffic Management

- Traffic Signal/Control • Incident Management • Traffic Information • Safe-driving Support
- Traffic Enforcement • Parking Management

■ Public Transportation

- Bus Information/ Management System • Public Transportation Information/Management
- Multi Modal Information/Management • Bus Rapid Transit System/Solution
- Pedestrian/Disabled Support System

■ Electronic Payment

- Electronic Toll Collection • Electronic Parking Payment • Electronic Fare Payment

■ Traffic Information Integration/Management

- Traffic Information Integration • Traffic Information Center Traffic Data Management

Traveler Information

- Pre/On-Trip Traveler Information Service • Telematics Service

Advanced Vehicle/Highway

- Safe-driving Vehicle & Highway • Autonomous Driving • Drive Assistant System

Commercial Vehicle Operation

- Fleet Management System • Hazardous Freight Management • Logistics

Others ()

2nd category

- Hardware ■ Software ■ SI Consulting ■ Others ()

Ongoing ITS Project or R&D

Project on developing Image enhancer by removing smog
Recognition System of European Car Plates

ETC (Patent)

Parking Enforcement System
Security Monitoring System

ITS Product & Technologies

- DVS-160 (HD.264 Image Enhancer)
- LCU-1100N (Parking and Plates Recognition System)
- MCU-100N (Multi Function Controller)
- MCU-1200N (Multi Function Controller)
- MPCU-1000N (Multi Function Power Controller)
- NVR112S (Network Video Recorder)
- PCU-100N (Power Controller)
- PE15S (Controller)
- Parking Enforcement System
- Intelligent Security Monitoring System
- Security Monitoring System in School Zone

General Information

Company Name: HANILSTM CO. LTD / **Website:** www.hanilstm.com

Address: #709, Joong-ang Induspia V, 138-6 Sangdeawondong, Joong-won-gu,
Seong-nam-city, Gyeonggi-do, Korea

Contacts

Name: Hyoung Jae Park / **Department:** Department Information & Communication
Phone(office): 82-31-739-5774 / **Fax (office):** 82-31-739-5755 / **Phone(mobile):**
E-mail: hjp8633@hanilstm.com



Description

Established in 1974, LSIS is the leader in the Korean industrial systems, electric power and automation market, and we are working towards becoming an international player in the world automation industry and electric power. As for the field of ITS and Railway System, We also provide traffic control systems on the road and railway with reinforced safety and reliability to make travel safe and sound

Business Area

1st category

■ Traffic Management

- Traffic Signal/Control • Incident Management • Traffic Information • Safe-driving Support
- Traffic Enforcement • Parking Management

■ Public Transportation

- Bus Information/ Management System • Public Transportation Information/Management
- Multi Modal Information/Management • Bus Rapid Transit System/Solution
- Pedestrian/Disabled Support System

■ Electronic Payment

- Electronic Toll Collection • Electronic Parking Payment • Electronic Fare Payment

■ Traffic Information Integration/Management

- Traffic Information Integration • Traffic Information Center Traffic Data Management

Traveler Information

- Pre/On-Trip Traveler Information Service • Telematics Service

Advanced Vehicle/Highway

- Safe-driving Vehicle & Highway • Autonomous Driving • Drive Assistant System

■ Commercial Vehicle Operation

- Fleet Management System • Hazardous Freight Management • Logistics

■ Others ()

2nd category

- Hardware ■ Software ■ SI ■ Consulting Others ()

Ongoing ITS Project or R&D

RFID-based Toll Collection System, Non-human Operated Automatic Toll Collection, Automatic Fare Collection

ETC (Patent)

Method of detecting a wire disconnection of traffic sign lamp, Contradiction detecting method for traffic signal controller, Vehicle speed measurement and detecting method, Smart loop detecting circuit, Power control equipment of traffic signal controller etc

ITS Product & Technologies

| Product Offerings |

- Toll Collection System – AVC, Enforcement System, ETC (RF, IR, RFID etc.)
- Traffic Signal Control System, Traffic Data Collection/Distribution System
- Others : Automatic Vehicle Enforcement System, Advanced Traffic Information System, Highway Traffic Management System, Bus Information System, Automatic Fare Collection etc.

| Technologies |

- RFID, DSRC RSE and Tag/On-Board Unit for Toll Collection / Parking Management / Traffic Data Collection
- Building Management, Green City System

General Information

Company Name: LSIS. Co. Ltd. / **Website:** www.lsis.biz

Address: LS Tower, 127, LS-ro, Dongan-gu, Anyang-si Gyeonggi-do, 431-848, Korea

Contacts

Name: Hyukho Kwon / **Department:** Public Transportation

Phone(office): 82-22034-4927 / **Fax (office):** 82-22034-4243 / **Phone(mobile):** 82-107154-8326

E-mail: hhwona@lsis.biz



Description

Kyungbong is one of Korea's leading companies in traffic field providing Transport Information System solution, concretize and realizes the needs of transport information in our life. Our core solution is not only providing individual solutions, but also integrating several individual solutions together by including reorganization and recreation of variable factors and controlling the flow of data in order to realize the harmonizing systematic integrated solutions. For this reason, We also focuses on the ability of management skills and nurturing talented employees. Transport information system business usually belongs to the project of government and public offices. Government offices issues the project to install the detector, Variable Message Sign, CCTV in national, city or national highways and build the Traffic Information center on the spot for road supervisors, operator or users to achieve information when they need.

Business Area

1st category

■ Traffic Management

- Traffic Signal/Control • Incident Management • Traffic Information • Safe-driving Support
- Traffic Enforcement • Parking Management

■ Public Transportation

- Bus Information/ Management System • Public Transportation Information/Management
- Multi Modal Information/Management • Bus Rapid Transit System/Solution
- Pedestrian/Disabled Support System

□ Electronic Payment

- Electronic Toll Collection • Electronic Parking Payment • Electronic Fare Payment

■ Traffic Information Integration/Management

- Traffic Information Integration • Traffic Information Center Traffic Data Management

■ Traveler Information

- Pre/On-Trip Traveler Information Service • Telematics Service

□ Advanced Vehicle/Highway

- Safe-driving Vehicle & Highway • Autonomous Driving • Drive Assistant System

□ Commercial Vehicle Operation

- Fleet Management System • Hazardous Freight Management • Logistics

□ Others ()

2nd category

- Hardware □ Software ■ SI □ Consulting □ Others ()

Ongoing ITS Project or R&D

- Construction of Automated Traffic Management System(ATMS) in Kyunggi-do
- Construction of IT infrastructure in 14th apartment complex, Magok
- Construction of Metropolitan bus information system between Bucheon-Siheung city
- Construction of ITS in Sung-nam city(Phase 2)
- Construction of CCTV system in 2nd district of government complex(Phase 1)
- Maintenance service of road traffic information system in Busan regional construction and management administration.
- Maintenance service of integrated traffic information centre

- Maintenance service of national road ITS for Seoul regional construction and management administration
- Construction of security CCTV Phase 5
- Procure and installation of Bus Information Terminal in Pocheon city
- Construction of harbor monitoring system in Mokpo city
- Maintenance of ITS
- Construction of ITS integrated situation room in Hanam city

ETC (Patent)

Certification(8)

- Verification of manufacturer(CCTV, VDS, Software), ISO 9001/14001, Inno-Biz, Main-Biz and etc.

Prize(7)

- Korea environment technology award by the Ministry of environment and etc.

Patent(10) and utility model(2)

- Crosswalk safety system, Integrated on-board equipment for BIS, easy information search system and etc.

Software registration(37)

- TISK, Cloud gateway client, User-oriented BIT software, Traffic information message processing software and etc.

Design registration(15)

- Passenger terminal, Remote control for BIT, GUI and icon for BIT, GUI and icon for mobile phone and etc.

ITS Product & Technologies

| Product Offerings |

Display Information

- Bus ETA, Weather, Message, Images, Videos, Bus route and estimated time to key destinations.

Bus Information Terminal ▶



Display Information

- Operation commencing time, Estimated time and distance to final destination, Traffic status for road ahead, Current time, Messages, Messages, GPS reception sensitivity, CDMA reception sensitivity and etc.



On Board Unit ▲

| Technologies |



General Information

Company Name: Kyungbong Co., Ltd. / **Website:** www.kyungbong.co.kr

Address: 899-5, Hoggae-dong, Dongan-gu, Anyang-si, Gyeonggi-do, Korea 431-080

Contacts

Name: Sang Chul, Lee / **Department:** Overseas Sales

Phone(office): 82-31-470-4800 / **Fax (office):** 82-31-456-4826 / **Phone(mobile):** 82-10-4145-8513

E-mail: scllee@kbits.co.kr



Description

Neighbor System has had top class competitiveness in the IT industry by performing lots of various projects related to Intelligent Transport System(ITS). Neighbor System has an abundance of excellent employees who have a wide range of background and experiences on developing software, and has accumulated a variety of professional technologies of Multimedia/Mobile/LBS such as a technology to construct many kinds of Information Center connected with LBS/Telematics/Visualization System and develop solutions of its terminals, a technology of Visual Communications, applied technologies of GIS/GPS, and so on. Neighbor System has supplied quality technologies and services combined with ITS and has satisfied our clients very highly. Especially, Neighbor System has been providing self-developed softwares and construct systems for cutting-edge traffic infra construction business of Korean local governments and has been leading ITS business by cooperating with Korean major companies and developing technologies together. Neighbor System promises to provide hi-quality products and services based on its corporate culture: trust and responsibility.

Business Area

1st category

■ Traffic Management

- Traffic Signal/Control • Incident Management • Traffic Information • Safe-driving Support
- Traffic Enforcement • Parking Management

■ Public Transportation

- Bus Information/ Management System • Public Transportation Information/Management
- Multi Modal Information/Management • Bus Rapid Transit System/Solution
- Pedestrian/Disabled Support System

■ Electronic Payment

- Electronic Toll Collection • Electronic Parking Payment • Electronic Fare Payment

■ Traffic Information Integration/Management

- Traffic Information Integration • Traffic Information Center Traffic Data Management

□ Traveler Information

- Pre/On-Trip Traveler Information Service • Telematics Service

□ Advanced Vehicle/Highway

- Safe-driving Vehicle & Highway • Autonomous Driving • Drive Assistant System

□ Commercial Vehicle Operation

- Fleet Management System • Hazardous Freight Management • Logistics

□ Others ()

2nd category

- Hardware ■ Software ■ SI ■ Consulting □ Others ()

Ongoing ITS Project or R&D

- ITS operating software advanced services
- The Second Tongyeong-city' Bus Management System constructing
- Ulsan-metropolitan city' Bus Information System expanding and advanced constructing
- Changwon-city' Bus Information System constructing
- Gumi-city' wide area Bus Information System S/W Development Center
- Korea Expressway Corporation "ITS Operating Systems Improvement S/W development Center"
- Gyeonggi-do' ITS Center Video Software Development

- Situation room of metropolitan transportation constructing
- Relevant agencies traffic information integration and traffic analysis system developed

ETC (Patent)

Prize

- 2007 Prime Minister's Commendation(National Records Management)
- 2012 KICTEP(Korea Institute of Construction & Transportation Technology Evaluation and Planning) Chairman Commendation(Construction and transportation industry development)

Patent

- Method of providing Traffic information pursuant to accident data on drive way
- Video transfer system
- Camera Select System and method of selecting camera using dual multi frequency
- Camera Select System and method of Selecting Camera using telephone numbers

ITS Product & Technologies

| Product Offerings |

EasyMapX



- As consisting of ActiveX component and Map server that help to develop GIS application, EasyMapX can apply to various fields including BIS, Traffic conditions control system, and so on.
- EasyMapX can provide the easy-to-use, effective map caches on the web as well as the basic functions requested by GIS application program such as display control, edit and thematic map.
- EasyMapX, easily possible to edit the user object through the API, can provide development environments appropriate to web application programs.
- Especially, EasyMapX can provide the optimized components for the bus stations and routes of BIS system.

Application fields

- BIS/BMS, ITS (Facility Management, etc) Map Application Terminal
- Vehicle position control (Taxi, rental cars, vans, company cars, etc.)
- For communicating information expressed Traffic Display
- Control of the center of the display throughout the project

Bus Information System(BIS)



Bus route editing



Vehicle control



Traffic Display



Key Features

- Upgrade speed of display through management of memory.
- Point continuous selection function, Automatic search function selectable link.
- Function through caching, version control and Off-Line Operation.
- Registered users of the object / Edit Bitmap express / Mouse Support.



General Information

Company Name: NEIGHBOR SYSTEM / **Website:** www.neighbor21.co.kr

Address: 16th Fl. IT Venture Tower East Wing, 78 Garak-Dong, Songpa-Gu, Seoul, Korea, 138-950

Contacts

Name: Boin Choi / **Department:** Mobile Business Development

Phone(office): 82-2-6258-1500 / **Fax (office):** 82-2-6258-0145 / **Phone(mobile):** 82-10-9263-2717

E-mail: bchoi@neighbor21.co.kr



Description

Road Traffic Authority(KoRoad) has been doing its best to reduce traffic accidents by providing traffic safety education, checking safety facilities, developing traffic technologies, broadcasting traffic information and so on.

Especially from this year, 26 of driver's license test courses around the nation take charges of license work and it became the road traffic safety total service provider.

KoRoad will maximize organization's competence to save more citizens from traffic accidents, and through 'Serving Management', 'Science Management', 'Moral management' KoRoad will grow as an organization that is representing Korea on road traffic safety, and will take full response as a life saver and road guide.

Business Area

1st category

■ Traffic Management

- Traffic Signal/Control • Incident Management • Traffic Information • Safe-driving Support
- Traffic Enforcement • Parking Management

□ Public Transportation

- Bus Information/ Management System • Public Transportation Information/Management
- Multi Modal Information/Management • Bus Rapid Transit System/Solution
- Pedestrian/Disabled Support System

□ Electronic Payment

- Electronic Toll Collection • Electronic Parking Payment • Electronic Fare Payment

■ Traffic Information Integration/Management

- Traffic Information Integration • Traffic Information Center Traffic Data Management

□ Traveler Information

- Pre/On-Trip Traveler Information Service • Telematics Service

■ Advanced Vehicle/Highway

- Safe-driving Vehicle & Highway • Autonomous Driving • Drive Assistant System

□ Commercial Vehicle Operation

- Fleet Management System • Hazardous Freight Management • Logistics

□ Others ()

2nd category

- Hardware □ Software □ SI ■ Consulting □ Others ()

Ongoing ITS Project or R&D

Research of Traffic Science

- The operation of international certified test agency (KOLAS)
 - ... R&D of testing and specifications for safety facilities
 - ... R&D of traffic equipment and traffic information management systems using (ITS)

Traffic Broadcasting Network(TBN)

- Provides fast and accurate traffic information to prevent traffic congestion and accidents

Public Relations for Traffic Safety

- National public relations campaigns aimed at enhancing the national understanding of traffic order

principles and preventing traffic accidents

- Pan-national campaign, 'Reduce Traffic Accidents'
- Children's Traffic Safety Public Relations Center

Technical Support for Traffic Safety

- Improving traffic safety in frequent accident areas and providing statistical analysis
- Technical support for traffic accident investigations
- Suggestions for the design, supervision, inspection, and improvement of traffic safety facilities
- Improvement of the 'Safety Zone'
- Technical support, design, and supervision for traffic signal systems
- Management and inspection of automated traffic enforcement systems on consignment

ETC (Patent)

International exchange

- PRI(La Prevention Routiere Internationale) regular member
- TRB(Transportation Research Board) regular member

Patent

- total : 213 - a patent application : 27 - registration of patent : 186

ITS Product & Technologies

System (Based on UTIS)



Test and Evaluation



- Evaluation System based on HILS using existing devices(L/C, RSE, EV_OBE, LC_OBE etc.)
- Using CORSIM traffic simulation model
- Debugging the algorithm of TSP
- Evaluating the effectiveness of TSP

General Information

Company Name: Road Traffic Authority / **Website:** www.KoRoad.or.kr

Address: 160 Wangsimni-gil, Junggu, Seoul, South Korea, 100-789

Contacts

Name: Hong, Kyung-Sik / **Department:** Traffic Science Institute

Phone(office): 82-2-2230-5252 / **Fax (office):** 82-2-2230-5269 / **Phone(mobile):** 82-10-2828-6874

E-mail: kshong@koRoad.or.kr



Description

Yooshin Engineering Corporation

- Specialized in transport facilities such as roads, airports, railroads, high-speed railroads, subways, bridges, tunnels, and ports, Yooshin has also provided various planning & design services in the living environmental sectors such as water resources, urban planning, leisure & landscape, and environment improvement over the past four decades. As an internationally competitive engineering firm, Yooshin has expanded its overseas market share by actively advancing into Southeast Asia, the Middle East, and Africa.
- ITS Research Group
 - : Concentrated to Design and Establish ITS for solving site-specific transport problems.

Business Area

1st category

- **Traffic Management**
 - Traffic Signal/Control • Incident Management • Traffic Information • Safe-driving Support
 - Traffic Enforcement • Parking Management
- **Public Transportation**
 - Bus Information/ Management System • Public Transportation Information/Management
 - Multi Modal Information/Management • Bus Rapid Transit System/Solution
 - Pedestrian/Disabled Support System
- Electronic Payment
 - Electronic Toll Collection • Electronic Parking Payment • Electronic Fare Payment
- **Traffic Information Integration/Management**
 - Traffic Information Integration • Traffic Information Center Traffic Data Management
- **Traveler Information**
 - Pre/On-Trip Traveler Information Service • Telematics Service
- Advanced Vehicle/Highway
 - Safe-driving Vehicle & Highway • Autonomous Driving • Drive Assistant System
- Commercial Vehicle Operation
 - Fleet Management System • Hazardous Freight Management • Logistics
- Others ()

2nd category

- Hardware Software SI **Consulting** Others ()

Representative Projects

ITS Establishment on the Detour Road Network with regard to the Expressway Network in the Seoul Metropolitan Region

- ▶ Basic and Detailed Design : - Survey of Current Traffic Situation - Analysis of Transportation Problems
 - Making-up Strategies for Traffic Management - Determination of Equipment's Location
- ▶ Systems Establishment :
 - Analysis of User Requirements
 - Database (Node-Link Systems, etc)
 - Realization of Traffic Management Strategy



Development Center's Software on Gwangan Grand Bridge in Busan Metropolitan City

- ▶ Data Collection System
 - VDS, CCTV, etc
- ▶ Data Provisional System
 - VMS, Internet, etc
- ▶ Enforcement System
 - WIM, VES, etc



ITS Master Plan for Seoul Metropolitan City

- ▶ Making-up Strategies for Traffic Management
- ▶ Analysis of System Requirements
- ▶ Implementation Schedule

Detailed Design of Weigh in Motion(WIM) on Gwangan Road

- ▶ Establishment Plan of the WIM
- ▶ Management Plan of the WIM
- ▶ Implementation Plan

Projects Performed (by Category)

FTMS(Freeway Traffic Management Systems)

- Proposal on Seoul Highway's Traffic Management Systems(2nd phase), 2001
- Development Center's Software on Gwangan bridge in Busan, 2002 - Detailed design on Gyeongbu(Yeongdong-Gimcheon) Freeway, 2003
- Detailed Design on East coast Freeway, 2004 - Detailed Design on ITS of Bukhang Grand Bridge, 2005
- Detailed Design on Tunnel Traffic Management Systems(TTMS) of Injae Tunnel, 2006
- Detailed Design on ITS of Myeongji Grand Bridge, 2007 - Detailed Design on Freeway Construction for 08~10', 2008
- Detailed Design on ITS of National Road No25 and No33, 2011

UTMS (Urban Traffic Management Systems)

- Proposal on ITS Model Deployment in Jeonju City., 2001 - Proposal on Bus Management Systems in Seoul, 2003
- The Master Plan for u-Traffic of Busan, 2007

RTMS(Rural Traffic Management Systems)

- ITS Establishment on the Detour Road Network with regard to the Expressway Network in the Seoul Metropolitan Region(Proposal, Detailed Design, and Establishment), 2003

ETCS(Electronic Toll Collection Systems)

- The ETCS in Korea Highway Corporation's ITS Master Plan, 2001 - Detailed design on MyungJee Bridge, 2007

WIM

- Detailed Design of WIM on Namhae Bridge and Samcheon Bridge, 2001 - Detailed Design of WIM on Gwangan Road, 2002
- Detailed Design of WIM on Yeongheung and Sunjae bridge, 2004

ITS Planning

- ITS Master Plan for Daegu Metropolitan, 2002 - ITS Master Plan for Changwon City, 2002
- ITS Master Plan for Seoul Beltway(Ilsan-Toigyewon), 2002 - ITS Master Plan for Busan Metropolitan, 2003
- ITS Master Plan and Preliminary Design for Incheon Free Economic Zone, 2007

Supervision for System Installation

- System Installation of FTMS for Seoul Outer Ring Road(Ilsan-Toigyewon), 2006
- System Installation of ITS for The Myeongji Grand Bridge Project, 2009

General Information

Company Name: Yooshin Engineering Corporation / **Website:** www.yooshin.co.kr
Address: 832-40, Yoksam-dong, Gangnam-gu, Seoul, Korea

Contacts

Name: Seong Yil BAE / **Department:** Overseas Business Dept.
Phone(office): 82-2-6202-0120 / **Fax (office):** 82-2-6202-0139 / **Phone(mobile):** 82-10-6243-3791
E-mail: sybae@yooshin.co.kr



Business Area

1st category

- Traffic Management**
 - Traffic Signal/Control • Incident Management • Traffic Information • Safe-driving Support
 - Traffic Enforcement • Parking Management
- Public Transportation**
 - Bus Information/ Management System • Public Transportation Information/Management
 - Multi Modal Information/Management • Bus Rapid Transit System/Solution
 - Pedestrian/Disabled Support System
- Electronic Payment**
 - Electronic Toll Collection • Electronic Parking Payment • Electronic Fare Payment
- Traffic Information Integration/Management**
 - Traffic Information Integration • Traffic Information Center Traffic Data Management
- Traveler Information**
 - Pre/On-Trip Traveler Information Service • Telematics Service
- Advanced Vehicle/Highway**
 - Safe-driving Vehicle & Highway • Autonomous Driving • Drive Assistant System
- Commercial Vehicle Operation**
 - Fleet Management System • Hazardous Freight Management • Logistics
- Others ()

2nd category

- Hardware **Software** **SI** Consulting Others ()

Ongoing ITS Project or R&D

Traffic Information gathering system Operation & Enhancement (KT - Korea Telecom)

- ▶ For 5 min period, gather information and manipulate traffic information, we provides more accurate and faster information than others

Tachograph Analysis System (Korea Transportation Safety Authority)

- ▶ Provides training model for safe driving through the analysis on daily/monthly navigation patterns of bus/taxi/delivery/ and commercial vehicle

ITS Product & Technologies

Traffic Master

- ▶ This software solution is to provide Integrated Traffic Information that gathering, process and analysis data from several traffic information system.



Tachograph Analysis System



CCTV Traffic Information Service on mobile phone



Traffic Master Solution

General Information

Company Name: Hubilon Co., Ltd. / **Website:** www.hubilon.com
Address: 3F Seocho World, 1355-3 Seocho-dong, Seocho-gu, Seoul, Korea

Contacts

Name: Byungmoo Cho / **Department:** Sales
Phone(office): 82-2-571-4169 / **Fax (office):** 82-2-571-4134 / **Phone(mobile):** 82-10-8867-1004
E-mail: bmcho@hubilon.com



Business Area

1st category

■ Traffic Management

- Traffic Signal/Control • Incident Management • Traffic Information • Safe-driving Support
- Traffic Enforcement • Parking Management

■ Public Transportation

- Bus Information/ Management System • Public Transportation Information/Management
- Multi Modal Information/Management • Bus Rapid Transit System/Solution
- Pedestrian/Disabled Support System
- Electronic Payment
 - Electronic Toll Collection • Electronic Parking Payment • Electronic Fare Payment
- Traffic Information Integration/Management
 - Traffic Information Integration • Traffic Information Center Traffic Data Management
- Traveler Information
 - Pre/On-Trip Traveler Information Service • Telematics Service
- Advanced Vehicle/Highway
 - Safe-driving Vehicle & Highway • Autonomous Driving • Drive Assistant System
- Commercial Vehicle Operation
 - Fleet Management System • Hazardous Freight Management • Logistics
- Others ()

2nd category

- Hardware ■ **Software** SI ■ **Consulting** ■ **Others** ()

Ongoing ITS Project or R&D

National Project

- SMART-I -> Automatic Tracking CCTV System Research and Development
- KICTEP (Korea Institute of Construction & Transportation technology Evaluation and Planning. -> SMART Highway Project

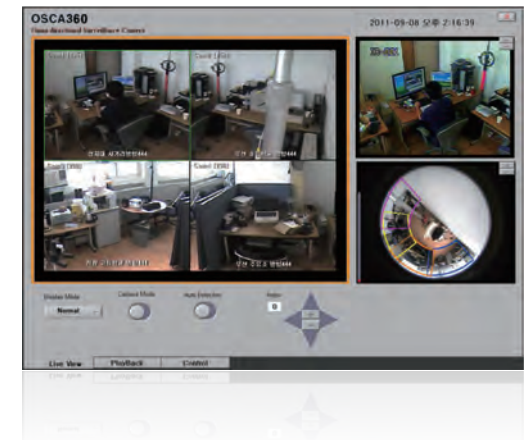
ETC (Patent)

- Patent No. 10-1057819 (Closed-circuit television)
 Patent No. 10-1009169 (Method of managing milepost for pavement management system)

ITS Product & Technologies

OSCA : Omnidirectional Surveillance Camera

- 360 degree Surveillance with one lens (about 100~140M)
- Automatic Object Tracking
- Divided Screens (up to 4 Screens)



General Information

Company Name: ROADKOREA Ltd / **Website:** www.roadkorea.co.kr
Address: Rm 1602, KDB U-Tower, 1029, Youngduk-dong, Giheung-gu, Yongin-si, Gyeonggi-do

Contacts

Name: Oh, Chang-kwon / **Department:** Transportaion, ITS Team
Phone(office): 82-31-627-5109 / **Fax (office):** 82-31-378-4854 / **Phone(mobile):** 82-10-2282-6852
E-mail: shinepower@nate.com



Business Area

1st category

- Traffic Management
 - Traffic Signal/Control • Incident Management • Traffic Information • Safe-driving Support
 - Traffic Enforcement • Parking Management
- Public Transportation
 - Bus Information/ Management System • Public Transportation Information/Management
 - Multi Modal Information/Management • Bus Rapid Transit System/Solution
 - Pedestrian/Disabled Support System
- Electronic Payment
 - Electronic Toll Collection • Electronic Parking Payment • Electronic Fare Payment
- Traffic Information Integration/Management
 - Traffic Information Integration • Traffic Information Center Traffic Data Management
- Traveler Information
 - Pre/On-Trip Traveler Information Service • Telematics Service

■ Advanced Vehicle/Highway

- Safe-driving Vehicle & Highway • Autonomous Driving • Drive Assistant System
- Commercial Vehicle Operation
 - Fleet Management System • Hazardous Freight Management • Logistics
- Others ()

2nd category

- Hardware ■ Software SI Consulting Others ()

ITS Product & Technologies

Drive Assistant System including the function like LDW(Lane Departure Warning), FCW(Forward Collision Warning), BSD(Blind Spot Detection) and Car Camera

MDAS-10



MDAS-20



General Information

Company Name: Movon Corporation / **Website:** www.movon.co.kr
Address: 5fl., Hyunjuk Bldg., 140-28, Samseong-dong, Gangnam-gu, Seoul, Korea Postcode 135-090

Contacts

Name: Harold Yim / **Department:** Convergence IT
Phone(office): 82-2-2050-4618 / **Fax (office):** 82-2-539-9666 / **Phone(mobile):** 82-2-10-6631-4601
E-mail: harold@movon.co.kr



Description

VITZROSYS is specialized advanced high technology monitoring & control system such as SCADA System, Distributed Control System (DCS), Intelligent Transportation System, Central Monitoring Software, Remote Terminal Unit, Process Remote Station, Automatic Traffic Violation Enforcement system, Traffic Signal Control System and Soft Logic Control.

Business Area

1st category

■ Traffic Management

- Traffic Signal/Control • Incident Management • Traffic Information • Safe-driving Support
- Traffic Enforcement • Parking Management

■ Public Transportation

- Bus Information/ Management System • Public Transportation Information/Management
- Multi Modal Information/Management • Bus Rapid Transit System/Solution
- Pedestrian/Disabled Support System

□ Electronic Payment

- Electronic Toll Collection • Electronic Parking Payment • Electronic Fare Payment

■ Traffic Information Integration/Management

- Traffic Information Integration • Traffic Information Center Traffic Data Management

□ Traveler Information

- Pre/On-Trip Traveler Information Service • Telematics Service

□ Advanced Vehicle/Highway

- Safe-driving Vehicle & Highway • Autonomous Driving • Drive Assistant System

□ Commercial Vehicle Operation

- Fleet Management System • Hazardous Freight Management • Logistics

□ Others ()

2nd category

- Hardware ■ **Software** ■ **SI** □ Consulting □ Others ()

Ongoing ITS Project or R&D

Uijeongbu UTIS, Ik-san ITS, An-yang ATMS, Go-yang UTIS, Gunpo UTIS, Ui-wang UTIS, Kimpo UTIS

ETC (Patent)

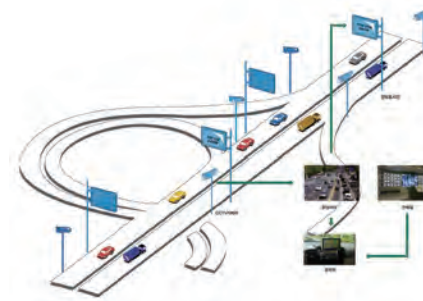
Number Plate Extraction Method of a Car Image, Auto transportation Information Extraction System and Thereby Method

ITS Product & Technologies

Transport IT Convergence and Integration Field

Traffic Management Optimization Business | Public Transportation Information Business | CCTV Traffic Information Provision Business | Image Applied Service Business | U-CITY Integrated Business Product ATMS: Advanced Traffic Management System | ATIS: Advanced Traveler Information System | APTS: BIS/BMS System | CVO: UTIS, ATMS System

We provide optimal safe/convenient/green transport environment through intelligent and organic expansion of human/vehicle/infrastructure by grafting Telematics/ITS technology-based IT technology onto transit system, roads, and vehicles



General Information

Company Name: VITZRO C&C Co.,Ltd / **Website:** www.vitzrocnc.com

Address: 3F Vitzro Building, 233-3, 1Dong, Sungsu-2Ga, Sungdong-Gu, Seoul, Republic of Korea

Contacts

Name: Lee, Sang-Yong / **Department:** Planning & Management Team

Phone(office): 82-2-460-2041 / **Fax (office):** 82-2-462-1212 / **Phone(mobile):** 82-10-3340-5808

E-mail: sylee@vitzrosys.com



Business Area

1st category

■ Traffic Management

- Traffic Signal/Control • Incident Management • Traffic Information • Safe-driving Support
- Traffic Enforcement • Parking Management

■ Public Transportation

- Bus Information/ Management System • Public Transportation Information/Management
- Multi Modal Information/Management • Bus Rapid Transit System/Solution
- Pedestrian/Disabled Support System

■ Electronic Payment

- Electronic Toll Collection • Electronic Parking Payment • Electronic Fare Payment

■ Traffic Information Integration/Management

- Traffic Information Integration • Traffic Information Center Traffic Data Management

□ Traveler Information

- Pre/On-Trip Traveler Information Service • Telematics Service

□ Advanced Vehicle/Highway

- Safe-driving Vehicle & Highway • Autonomous Driving • Drive Assistant System

□ Commercial Vehicle Operation

- Fleet Management System • Hazardous Freight Management • Logistics

□ Others ()

2nd category

- Hardware ■ Software □ SI □ Consulting □ Others ()

Ongoing ITS Project or R&D

Smart Highway(Korea national project): WAVE based RSE's will be installed
 San Francisco Airport: WAVE based ETC(transponders) is bidding for purchase
 Korea National Road project: 6 major metropolitan cities purchased 5.8GHz DSRC RSE's

ETC (Patent)

Integrated road side equipment system and method for providing traffic information using the same

- Publication Number : 10-2005-0119334
- Registration Number : 10-0745014

ITS Product & Technologies

5.9GHz DSRC WAVE(IEEE 802.11p, 1609.x)OBE/RSE

- After market product: 5.9GHz DSRC WAVE based ETC
- Before market product: 5.9GHz DSRC WAVE OBE conforming to "Connected Vehicle" pilot

5.8GHz DSRC(Korea Standard) OBE/RSE

- 6 Metropolitan coverage RSE
- OBE for ETC("Hi-Pass")



General Information

Company Name: IT Telecom / **Website:** www.it-telecom.co.kr
Address: 555-9 Hogae-dong, The "O" valley bldg #517, Anyang, Gyeonggi-do, Korea

Contacts

Name: Bill(Weon Mook) Choi / **Department:** Global Marketing
Phone(office): 031-479-6541~2 / **Fax (office):** 031-479-6540 / **Phone(mobile):** 010-3101-6541
E-mail: billchoi@it-telecom.co.kr



Description

Y&H E&C will make a contribution to the nation and human society through fields of technology and related products from ITS/BIS/GIS. As a Venture Company of Technology that owns various Reference Sites, best technology of ITS/BIS/GIS fields and manufactured goods such as BIT, which is developed by onself.

Business Area

1st category

■ Traffic Management

- Traffic Signal/Control • Incident Management • Traffic Information • Safe-driving Support
- Traffic Enforcement • Parking Management

■ Public Transportation

- Bus Information/ Management System • Public Transportation Information/Management
- Multi Modal Information/Management • Bus Rapid Transit System/Solution
- Pedestrian/Disabled Support System

□ Electronic Payment

- Electronic Toll Collection • Electronic Parking Payment • Electronic Fare Payment

■ Traffic Information Integration/Management

- Traffic Information Integration • Traffic Information Center Traffic Data Management

■ Traveler Information

- Pre/On-Trip Traveler Information Service • Telematics Service

■ Advanced Vehicle/Highway

- Safe-driving Vehicle & Highway • Autonomous Driving • Drive Assistant System

■ Commercial Vehicle Operation

- Fleet Management System • Hazardous Freight Management • Logistics

□ Others ()

2nd category

- Hardware ■ Software ■ SI ■ Consulting ■ Others ()

Ongoing ITS Project or R&D

- Overseas greenhouse gas reduction projects for using Indicator
- Azerbaijan Intelligent Transport System(ITS) in Baku City (in BIS/GIS Field)
- TOPIS Management & Maintenance in Seoul City
- ATMS in Suncheon City (Center S/W)
- Management & Maintenance in Daejeon City
- ITS Management & Maintenance in Daejeon City
- Bus Information System in Suncheon City
- Bus Information System in Paju City
- Bus Information System in Seongnam City

ETC (Patent)

Technical Patent Registration : Navigation System using RFID Tag. (2011)

S/W registration : 10 programs (2005 ~ 2011)

Winning a 4th Korea Internet Award 2010 (Special Mention Award)

Confirmation of Innovational Technology Small Business(INNO_BIZ)

Certification of ISO 9001 etc.

ITS Product & Technologies

H/W

BIT (Bus Information Terminal)

- Real-time information display equipment to provide transportation information..

OBE (On Board Equipment)

GPS Module

- Adopting high sensitive SiRF StarIII LPx chip-set

S/W

ITS/ BIS(BMS)/ GIS Center S/W solutions

S/W (ITS/BIS/GIS)



H/W (Direct production and manufacturing)



General Information

Company Name: Y&H E&C Co., Ltd. / **Website:** www.ynhenc.com

Address: 1501, Daerung Technotown 15, 224-5, Gwanyang-Dong, Dongan-gu, Anyang-city Gyeonggi-do, South Korea, 431-062

Contacts

Name: Kyang Kook, Park / **Department:** Counseling

Phone(office): 82-31-389-8877 / **Fax (office):** 82-31-389-8878 / **Phone(mobile):** 82-10-6263-9724

E-mail: kkpark@ynhenc.co.kr



Business Area

1st category

- **Traffic Management**
 - Traffic Signal/Control • Incident Management • Traffic Information • Safe-driving Support
 - Traffic Enforcement • Parking Management
- Public Transportation
 - Bus Information/ Management System • Public Transportation Information/Management
 - Multi Modal Information/Management • Bus Rapid Transit System/Solution
 - Pedestrian/Disabled Support System
- Electronic Payment
 - Electronic Toll Collection • Electronic Parking Payment • Electronic Fare Payment
- **Traffic Information Integration/Management**
 - Traffic Information Integration • Traffic Information Center Traffic Data Management
- Traveler Information
 - Pre/On-Trip Traveler Information Service • Telematics Service
- **Advanced Vehicle/Highway**
 - Safe-driving Vehicle & Highway • Autonomous Driving • Drive Assistant System
- Commercial Vehicle Operation
 - Fleet Management System • Hazardous Freight Management • Logistics
- Others ()

2nd category

- **Hardware** ■ **Software** ■ **SI** □ Consulting □ Others ()

Ongoing ITS Project or R&D

- Korea Automobile Testing & Research Institute (Transportation Safety Authority) : USD 2M
- Research Institute Of Highway (MOC China) : USD 3M

ETC (Patent)

- Government Certified Innovative Business Company (INNOBIZ) / Government Certified R&D Institute
- Patent : 2DOF Motion System (No.2001-0038226) , 3D Simulator (No.2003-0001610), and etc..

ITS Product & Technologies

- Complete solutions for R&D driving simulators, training simulators, electric motion platforms, vehicle control systems and telematics
- State-of-the-art technologies in Image Generation System, Vehicle Dynamics System, Motion System, Image Display System, Sound System, Console System, and Control Force Loading System



General Information

Company Name: INNOSIMULATION Inc. / **Website:** www.innosim.com
Address: #625, Sangam-dong 1580, Mapo-ku, Seoul, 121-912, Korea

Contacts

Name: Sean Kim / **Department:** Sales Coordination Dep
Phone(office): 02-304-9500 / **Fax (office):** 02-304-3004 / **Phone(mobile):** 010-9274-9502
E-mail: seankim@innosim.com



Business Area

1st category

■ Traffic Management

- Traffic Signal/Control • Incident Management • Traffic Information • Safe-driving Support
- Traffic Enforcement • Parking Management

Public Transportation

- Bus Information/ Management System • Public Transportation Information/Management
- Multi Modal Information/Management • Bus Rapid Transit System/Solution
- Pedestrian/Disabled Support System

■ Electronic Payment

- Electronic Toll Collection • Electronic Parking Payment • Electronic Fare Payment

Traffic Information Integration/Management

- Traffic Information Integration • Traffic Information Center Traffic Data Management

Traveler Information

- Pre/On-Trip Traveler Information Service • Telematics Service

Advanced Vehicle/Highway

- Safe-driving Vehicle & Highway • Autonomous Driving • Drive Assistant System

Commercial Vehicle Operation

- Fleet Management System • Hazardous Freight Management • Logistics

Others ()

2nd category

- Hardware ■ Software ■ SI Consulting Others ()

Ongoing ITS Project or R&D

Parking Guidance and Parking Position Guidance System Project for KINTEX(Korea International Exhibition Center)

LPR based Crime Prevention System Project for Paju city in Kyonggi-do

Automatic Vehicle Identification(AVI) Installation of ATMS Project in Anyang-city

Vehicle Access Control Project for HYNIX Semiconductor in Icheon-city

Unauthorized Parking and Stopping Enforcement System in Gangnam-gu, Seoul

ETC (Patent)

Authorized NET(No.0522) from Ministry of Knowledge Economy, Video Detecting and Speed Calculating Technology for Moving Vehicles.

Total Patent 22 cases including: The Optimizing Methods of Vehicle Plate Images

ITS Product & Technologies

License Plate Recognition(LPR), Automatic Number Plate Recognition(ANPR)
Automatic Vehicle Identification(AVI), LPR based Crime Prevention System
Over Speed Enforcement System, Traffic Signal Enforcement System
Bus Lane Enforcement System, Unauthorized Parking and Stopping Enforcement System
Parking Management System, Vehicle Access Control System
Parking Guidance and Parking Position Guidance System



General Information

Company Name: Inpeg Vision Co., Ltd. / **Website:** www.inpeg.com

Address: 226-3 Bugok-dong Geumjeong-gu Busan, 609-320, Korea

Contacts

Name: Mr. KyungDahl Moon / **Department:** Overseas Marketing Team

Phone(office): 82-70-7169-0151 / **Fax (office):** 82-2-839-0911 / **Phone(mobile):** 82-10-4223-6200

E-mail: moonkd@inpeg.com



Business Area

1st category

■ Traffic Management

- Traffic Signal/Control • Incident Management • Traffic Information • Safe-driving Support
- Traffic Enforcement • Parking Management

■ Public Transportation

- Bus Information/ Management System • Public Transportation Information/Management
- Multi Modal Information/Management • Bus Rapid Transit System/Solution
- Pedestrian/Disabled Support System

■ Electronic Payment

- Electronic Toll Collection • Electronic Parking Payment • Electronic Fare Payment

■ Traffic Information Integration/Management

- Traffic Information Integration • Traffic Information Center Traffic Data Management

□ Traveler Information

- Pre/On-Trip Traveler Information Service • Telematics Service

■ Advanced Vehicle/Highway

- Safe-driving Vehicle & Highway • Autonomous Driving • Drive Assistant System

□ Commercial Vehicle Operation

- Fleet Management System • Hazardous Freight Management • Logistics

□ Others ()

2nd category

- Hardware ■ Software ■ SI □ Consulting ■ Others ()

Ongoing ITS Project or R&D

- ITS Integration in highway – Korea Expressway Corporation
- Crime Prevention & Prevalence System – Namyangju City
- Nationwide Speed Violation & Red-Light Enforcement System

ETC (Patent)

KS Q ISO 9001 : 2009 / ISO 9001 : 2008

- Design, Development, Production and Installation of Traffic Surveillance Imaging System, Vehicle Detection System, CCTV

KS Q ISO 14001 : 2004 / ISO 14001 : 2004

- Design, Development, Production and Installation of Traffic Surveillance Imaging System, Vehicle Detection System, CCTV

CE

CR200(TopCam-200C) - Vehicle Enforcement System(#K1651/L07)
- EN 60950-1:2001

CR200(TopCam-200C) - Vehicle Enforcement System(#K1652/E07)
- EN 55022:1998 + A1 + A2:2003 - EN 55024:1998 + A1 + A2:2003
- EN 61000-3-2:2000 + A2:2005
- EN 61000-3-3:1995 + A1 + A2:2005

Surge Protection Equipment(#N8 07 04 63165 001)

- CPSA0113247

Patent

- AUTO LIGHTING CONTROL SYSTEM USING ANGLE OF VIEW OF ZOOM LENS (#10-2010-0063782)
- The system which integrated manages a traffic accident notice area (#10-2009-0088956)

- BETWEEN CENTER AND LOCAL SYSTEM COMMUNICATION STRUCTURE AND METHOD OF ITS (#10-2003-0052294)
- APPARATUS FOR COMPOSITE IMAGE SIGNAL PROCESSING (#10-2003-0042089)
- TRAFFIC MONITORING SYSTEM AND ITS METHOD (#10-1996-0007041)
- A SIGNAL PROCESSING SYSTEM FOR IMAGE SIGNAL COMPRESSION/DECOMPRESSION (#10-1994-0007834)

Award

Mongolia President's Award

- Award for contribution to South Korea-Mongolia partnership - Medal of 90th independence day(#77319)

Korea Expressway Corporation.

- Appreciation Award for ITS Project in 2010.(#10-231)

Chief of the Ulaanbaatar City/Traffic Control Center

- Appreciation Award Of Honor for Ulaanbaatar City ITS Project in 2010.

Chief of Rotary International.

- Award Of Honor for Centennial of SeokKang Rotary Club 3640 District.(#2004-05-374)

ITS Product & Technologies

Traffic information system

- Vehicle Detection System(IMAGEPRO 1000) - Automatic Vehicle Identification System(IMAGEPRO 2000)
- Automatic Incident Detection System(IMAGEPRO 3000) - CCTV for Traffic Information System(IMAGEPRO 4000)

Vehicle Enforcement System

- Mobile Enforcement System(TOPCAM 1000) - Speed Violation Enforcement System(TOPCAM 2000)
- Red-Light Enforcement System(TOPCAM 2001) - Point to Point Speed Enforcement System(TOPCAM 2002)
- Illegal Parking Enforcement System(TOPCAM 3000) - Mobile Enforcement System(TOPCAM 4000)
- Overload Enforcement System(TOPCAM 5000)

Security System

- Crime Prevention & Prevalence System(IMAGEPRO 5000) - Transport Safety System(IMAGEPRO 6000)
- Traffic accident Notice Area System (IMAGEPRO 7000)

CCTV System

- I-TV(Industrial CCTV)

SI(System Integration)

- Traffic control center - ITS Integration

Image Contents

- Image Server - Music Server

LED Light System

- Security Lighting - Outdoor Lighting



General Information

Company Name: TOPES Co., Ltd. / **Website:** www.topes.com

Address: 294 Nokchon-Ri ,Hwado-Eup ,Namyangju-Si, Gyeonggi-Do, 472-843 Korea
Tel. +82-31-593-0294, Fax +82-31-593-8607, e-mail: topes@topes.com

Contacts

Name: Lee, Sung Won / **Department:** Sales & Marketing Dept. / International Business Team

Phone(office): 82-31-593-0294 / **Fax (office):** 82-31-511-8286 / **Phone(mobile):** 82-10-3779-3113

E-mail: sungwonlee@topes.com

Business Area

1st category

- Traffic Management
 - Traffic Signal/Control • Incident Management • Traffic Information • Safe-driving Support
 - Traffic Enforcement • Parking Management
- **Public Transportation**
 - Bus Information/ Management System • Public Transportation Information/Management
 - Multi Modal Information/Management • Bus Rapid Transit System/Solution
 - Pedestrian/Disabled Support System
- Electronic Payment
 - Electronic Toll Collection • Electronic Parking Payment • Electronic Fare Payment
- Traffic Information Integration/Management
 - Traffic Information Integration • Traffic Information Center Traffic Data Management
- Traveler Information
 - Pre/On-Trip Traveler Information Service • Telematics Service
- **Advanced Vehicle/Highway**
 - Safe-driving Vehicle & Highway • Autonomous Driving • Drive Assistant System
- **Commercial Vehicle Operation**
 - Fleet Management System • Hazardous Freight Management • Logistics
- Others ()

2nd category

- **Hardware** ■ **Software** ■ **SI** Consulting Others ()

Ongoing ITS Project or R&D

- WAVE RSU and OBU Development
- WAVE Safety Applications

ETC (Patent)

- DSRC Protocol Algorithm-2

ITS Product & Technologies

- DSRC Protocols- IP
- WAVE MAC and Higher Protocols-IP
- WAVE Safety Application
- Bus Information System

General Information

Company Name: Tricomtek Co.,Ltd / **Website:** www.tricomtek.com
Address: 2F,YoungBo Building, 628-6, DeungChon-Dong, GangSuh-Gu, Seoul, Korea

Contacts

Name: SangHo Lee / **Department:** ITS Business Development
Phone(office): 82-2-3662-2471 / **Fax (office):** 82-2-3662-2254 / **Phone(mobile):** 82-10-2002-0785
E-mail: sangho@tricomtek.com

Business Area

1st category

- **Traffic Management**
 - Traffic Signal/Control • Incident Management • Traffic Information • Safe-driving Support
 - Traffic Enforcement • Parking Management
- **Public Transportation**
 - Bus Information/ Management System • Public Transportation Information/Management
 - Multi Modal Information/Management • Bus Rapid Transit System/Solution
 - Pedestrian/Disabled Support System
- **Electronic Payment**
 - Electronic Toll Collection • Electronic Parking Payment • Electronic Fare Payment
- **Traffic Information Integration/Management**
 - Traffic Information Integration • Traffic Information Center Traffic Data Management
- Traveler Information
 - Pre/On-Trip Traveler Information Service • Telematics Service
- Advanced Vehicle/Highway
 - Safe-driving Vehicle & Highway • Autonomous Driving • Drive Assistant System
- Commercial Vehicle Operation
 - Fleet Management System • Hazardous Freight Management • Logistics
- Others ()

2nd category

- Hardware** **Software** **SI** ■ **Consulting** Others ()

Ongoing ITS Project or R&D

Trung Luong – My Thuan Expressway Construction Investment Project(Vietnam) – Technical Design of Traffic Management Systems and Toll Collection Systems, 2010~2011

ETC (Patent)

Ubiquitous Intelligent Disaster Prevention System, 2010, 1020080066210

ITS Product & Technologies

Feasibility Study, Master Plan, Basic and Technical Design, Supervision

General Information

Company Name: Korea Consultants International Co., Ltd. / **Website:** www.kcieng.com
Address: 7F, Daerung Techotown 15, 224-5, Gwanyang-2dong, Dongan-gu, Anyang-si Gyeonggi-do, Republic Of Korea

Contacts

Name: Hyon-Su Baek / **Department:** Transportation
Phone(office): 82-31-8086-5853 / **Fax (office):** 82-31-8086-5727 / **Phone(mobile):** 82-10-5340-9145
E-mail: spade5@kcieng.com



Business Area

1st category

- Traffic Management
 - Traffic Signal/Control • Incident Management • Traffic Information • Safe-driving Support
 - Traffic Enforcement • Parking Management
- Public Transportation
 - Bus Information/ Management System • Public Transportation Information/Management
 - Multi Modal Information/Management • Bus Rapid Transit System/Solution
 - Pedestrian/Disabled Support System
- Electronic Payment
 - Electronic Toll Collection • Electronic Parking Payment • Electronic Fare Payment
- **Traffic Information Integration/Management**
 - Traffic Information Integration • Traffic Information Center Traffic Data Management
- Traveler Information
 - Pre/On-Trip Traveler Information Service • Telematics Service
- Advanced Vehicle/Highway
 - Safe-driving Vehicle & Highway • Autonomous Driving • Drive Assistant System
- Commercial Vehicle Operation
 - Fleet Management System • Hazardous Freight Management • Logistics
- Others ()

2nd category

- **Hardware** ■ **Software** SI Consulting Others ()

Ongoing ITS Project or R&D

- Developed Software which distinguish the car type based on dimension of wheelbase
- Developed mobile standard car detecting equipment. /Developed small auto detecting air robot which featured as vertical takeoff and landing.

ETC (Patent)

- Awarded as grand prize for digital technology (Ministry of Knowledge Economy 2007)/ Patent for method to measure vehicle density. (KO 0625678, 2009.06)/ Patent for contactless car detecting equipment (KO 10-2009-0050979, 2009.06)/ Patent for standard multi laned car detecting equipment. (KO 10-2009-0057765, 2009.06) / Patent for equipment to distinguish the vehicle type(KO 10-2009-0058132, 2009, 11)

ITS Product & Technologies

AVI (AUTOMATIC VEHICLES IDENTIFICATION)/VES(VIOLATION ENFORCEMENT SYSTEM)/TTMS(TunnelTraffic Management System)/ILLEGAL PARKING ENFORCEMENTS/BUSES LANES ENFORCEMENT



SDU SIGNAL DISTRIBUTOR



ELCB AUTO RECOVERY DEVICE



LPR (license plate reorganization)



MULTI FUNCTION POWER CONTROL DEVICE



INTELLIGENT FUNCTION POWER DEVICE



POWER TYPE SURGE PROTECTOR



General Information

Company Name: HITECOMSYSTEM / **Website:** www.hitecom.co.kr
Address: 6F Kolon-Techno Valley 60-4, Gasan-Dong, Geumcheon-gu, Seoul, Korea, 153-023

Contacts

Name: Lee, Dae-Hee / **Department:** Public-business Department
Phone(office): 82-2-839-8071 / **Fax (office):** 82-2-839-8072 / **Phone(mobile):** 82-10-6412-6155
E-mail: dhlee@hitecom.co.kr



Description

KEON-A is a leading manufacturer and exporter of Traffic Law Enforcement System with domestic market share No.1 in South Korea since foundation of 1987. KEON-A has key solution of traffic law enforcement system such as Speed, Traffic signal, Criminal Vehicle Capturing, etc using Automatic Number Plate Recognition system(LPR or ANPR).

Business Area

1st category

■ Traffic Management

- Traffic Signal/Control • Incident Management • Traffic Information • Safe-driving Support
- Traffic Enforcement • Parking Management

□ Public Transportation

- Bus Information/ Management System • Public Transportation Information/Management
- Multi Modal Information/Management • Bus Rapid Transit System/Solution
- Pedestrian/Disabled Support System

□ Electronic Payment

- Electronic Toll Collection • Electronic Parking Payment • Electronic Fare Payment

□ Traffic Information Integration/Management

- Traffic Information Integration • Traffic Information Center Traffic Data Management

□ Traveler Information

- Pre/On-Trip Traveler Information Service • Telematics Service

□ Advanced Vehicle/Highway

- Safe-driving Vehicle & Highway • Autonomous Driving • Drive Assistant System

□ Commercial Vehicle Operation

- Fleet Management System • Hazardous Freight Management • Logistics

■ Others (Traffic Law Enforcement System)

2nd category

- Hardware ■ Software □ SI □ Consulting □ Others ()

Ongoing ITS Project or R&D

- Project of Traffic Violation Fix System in Almaty, Kazakhstan
- Pilot of Speed & Traffic Signal Control Equipment and Vehicle Mounted Vehicle Plate Number Recognition System in Turkmenistan

ETC (Patent)

Certification

- ISO 9001:2008 - CE

Patent

- Unmanned Vehicle Photographing Equipment - Automatic Vehicle Number Recognition System
- Vehicle Speed Detection System - Traffic Law Violation Enforcement System

ITS Product & Technologies

| Product Offerings |

MS-CAM (Mobile Speed Camera)

MS-CAM is mobile type speed detection camera based on laser. This mobile camera can automatically detect and recognize the vehicle number plate at designated point.

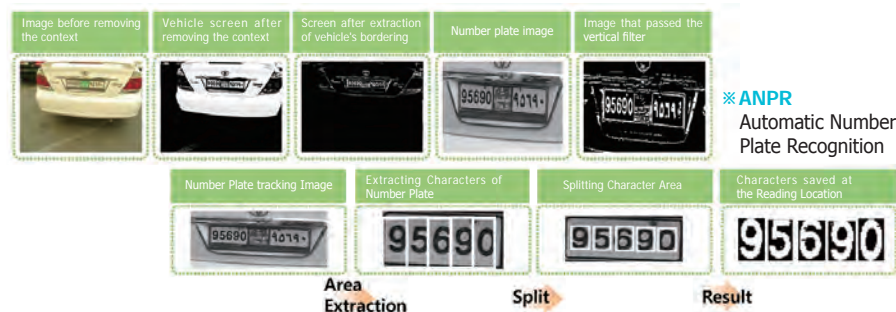


Specifications and Features

Camera	1.3M Pixel CCD Camera
Lens	Motorized 100mm to 120mm (include x2 Extender) Target Range : 80 to 120meters
Illuminator	Wire or Wireless Xenon Lamp 700nm IR Filter Life Time more than 100,000 times
Sensor	Laser Sensor Measurement Speed : 10~300km/h Speed Error Rate : Less than ±1% 905nm, Class (Eye Safety)
Controller	Intel Embedded Atom 1.6GHz 5.7inch color TFT LCD monitor with touch screen Operating Temperature : -30°C to 70°C All-in-One compact module for easy maintenance USB Memory Device : Over 100,000 image storage ANPR(Automatic Number Plate Recognition) (Option)
Housing	Size : 507(L) × 175(W) × 165mm(H) Weight : 6kg
Battery	Sealed Lead Acid Battery, 12V

| Technologies |

ANPR (Automatic Number Plate Recognition) System



General Information

Company Name: Keon-A Information Technology Co., Ltd / **Website:** www.keona.co.kr
Address: Keon-A Bldg, 401-2, Poongnap-dong, Songpa-gu, Seoul, Korea

Contacts

Name: M.G.KiIm / **Department:** International Marketing
Phone(office): 82-2-2041-5557 / **Fax (office):** 82-2-472-0914 / **Phone(mobile):** 82-10-4280-5019
E-mail: mgkim@keona.co.kr



Description

SAMWON FA has been developing lots of business in BIMS(Bus Information/Management System), AFC(Automatic Fare Collection), Electronic Payment and SI project. And SAMWON FA provides the best total solution and high reliability product based on over 30-years accumulated know-how. SAMWON FA intensively invests in R&D part for reacting rapidly changing IT environment. SAMWON FA will trailblaze new business with continuous challenge and innovation.

Business Area

1st category

■ Traffic Management

- Traffic Signal/Control • Incident Management • Traffic Information • Safe-driving Support
- Traffic Enforcement • Parking Management

■ Public Transportation

- Bus Information/ Management System • Public Transportation Information/Management
- Multi Modal Information/Management • Bus Rapid Transit System/Solution
- Pedestrian/Disabled Support System

■ Electronic Payment

- Electronic Toll Collection • Electronic Parking Payment • Electronic Fare Payment

□ Traffic Information Integration/Management

- Traffic Information Integration • Traffic Information Center Traffic Data Management

□ Traveler Information

- Pre/On-Trip Traveler Information Service • Telematics Service

□ Advanced Vehicle/Highway

- Safe-driving Vehicle & Highway • Autonomous Driving • Drive Assistant System

□ Commercial Vehicle Operation

- Fleet Management System • Hazardous Freight Management • Logistics

□ Others ()

2nd category

- Hardware ■ Software ■ SI ■ Consulting □ Others ()

Ongoing ITS Project or R&D

- Constructing Gyeongnam intercity bus transportation card payment system
- Constructing Ui-Sinseol LRT(Light Railroad Transit) AFC system
- Constructing Daejeon Riverside Expressway Electronic Toll Collection system
- Constructing Gwangju City intra-city bus transportation card payment system
- Manufacturing US TAXI PIM(Passenger Information Monitor)

ETC (Patent)

1. Patent

No.	Category	Reg No.	Name of Patent
1	Patent	1020110062486	RFID Tag embeded inlay, Card comprising the inlay and method for fabricating the inlay thereof
2	Patent	1020110061948	System and method for processing subway tickets

3	Patent	1010386530000	Method for fabricating RF-ID tags
4	Patent	1020100008490	Method for fabricating a pattern structure
5	Patent	1020050002687	Master of Electro-forming
6	Patent	1009802170000	Master of Electro-forming
9	Patent	1006882590000	Method for managing street parking lot
11	Patent	1005433910000	An observation system of giving an injection of Ringer's solution
13	Utility model	2003408890000	Parking Fare Collection System
14	Utility model	2003436020000	Credit card settlement vending machine for selling for bidden items according to years
15	Utility model	2004108600000	System for making a call of condolence remotely using Internet

2. Certification

- | | |
|---|--|
| 1) Wirelss device for wireless data communication-KCC | 7) Automatic Ticket Vending Machine-KCC |
| 2) Ticket Gate-KCC | 8) Automatic fare adjustment machine-KCC |
| 3) Wide Ticket Gate-KCC | 9) Central Ticket Issuing Machine-KCC |
| 4) Portable Ticket Gate, Ticket Gate for KSPO-KCC | 10) Toll road unmanned card reader-KCC |
| 5) Bus card reader-KCC | 11) Wireless device for RFID/USN - KCC |
| 6) Self Service Charger-KCC | 12) US Taxi(Electronic Payment System)-FCC |

* KSPO - Korea Sport Promotion Foundation

* KCC - Korea Communications Commission

* FCC - Federal Communications Commission

ITS Product & Technologies

Product Offerings |



Technologies |



1.AFC
An Automated Fare Collection (AFC) is to automatize the vending tickets, counting riders, and collecting revenues when passengers use a transportation card. It automatically creates and manages various kinds of statistics and accounting data.



2.BUS fare collection system
BUS fare collection system is to automatize the fare charging, collection, settling and managing various kinds of statistics and accounting data.



3. Toll road fare collection system

Toll road fare collection system provides fare collection, settlement and statistical data management. It is the highest-installed Toll road fare collection system in Korea.

General Information

Company Name: SAMWON FA Co., Ltd. / **Website:** www.samwonfa.com

Address: Head Office : 470-5, Moonhyun 2-Dong, NAM-Gu, Busan, Korea

Seoul Office : 1507, Woolim Lions Valley B-dong, 371-28, Gasan-dong Geumcheon-Gu, Seoul, Korea

Contacts

Name: Yang Hyun-Jin / **Department:** E-Solution BIZ Team

Phone(office): 82-2-6263-3000 / **Fax (office):** 82-2-6263-3001 / **Phone(mobile):** 82-10-3163-5976

E-mail: hjyang@samwonfa.com



Description

Airpoint's ETC(Electronic Toll Collection)Total Solution includes RSE(Road side equipment), OBE(On board Equipment), Chip Solution and DSRC protocol Communication Analyzer. Especially, Using the chip solutions(RF IC&MODEM IC) which were developed and manufactured from Airpoint, the global leader of Radio Signal processing technology, the problem of 'Delay' has been solved. Variety of special OBE line such as Solar type and Hybrid type which were developed and manufactured from Airpoint are highly popular in global Market currently and it can be easily applied to world market. RSE, the one equipped on the road side for communicating with OBE, it also has lot of sales references to many local governments of Korea. Together with Communication analyzer for all the test like Protocol Conformance Analyzing, L2/L7 Test and S/W Reliability Test to get the certification, all the integrated and excellent solution relating ETC can be provided by Airpoint.

Business Area

1st category

- Traffic Management
 - Traffic Signal/Control • Incident Management • Traffic Information • Safe-driving Support
 - Traffic Enforcement • Parking Management
- Public Transportation
 - Bus Information/ Management System • Public Transportation Information/Management
 - Multi Modal Information/Management • Bus Rapid Transit System/Solution
 - Pedestrian/Disabled Support System
- Electronic Payment**
 - Electronic Toll Collection • Electronic Parking Payment • Electronic Fare Payment
- Traffic Information Integration/Management**
 - Traffic Information Integration • Traffic Information Center Traffic Data Management
- Traveler Information
 - Pre/On-Trip Traveler Information Service • Telematics Service
- Advanced Vehicle/Highway
 - Safe-driving Vehicle & Highway • Autonomous Driving • Drive Assistant System
- Commercial Vehicle Operation
 - Fleet Management System • Hazardous Freight Management • Logistics
- Others ()

2nd category

- Hardware** **Software** **SI** Consulting Others ()

Ongoing ITS Project or R&D

- Intelligent RF IC for OBE/RSE in ITS(ETC/TIS) ITS
- One chip solution(MODEM IC+ RFIC+ CPU) (will be released in second half of 2012)
- Joint Working with China OBE Manufacturer

ETC (Patent)

- OPERATING OF MULTI-FUNCTIONAL COMPLEX UNIT IN CAR910-1095936)
- THE APPARATUS FOR CONTROLLING THE SENSITIVITY BY USING DIGITAL GATING IN RECEIVER AND THE RECIEVER COMPRISING THE SAM(10-0902397)
- RECEIVER FOR DEDICATED SHORT RANGE COMMUNICATION USING 10MHZ INTERMEDIATE FREQUENCY (10-0863538)
- 15 PATENT REGISTERED.
- 18 PATENT APPLICATED

ITS Product & Technologies

Modem IC

- Coretex-M3 Core - Memory : 512 KB internal RAM
- ASK/FSK DSRC modem embedded
- Smart card controller - Flexible memory interface
- 32 GPIO - 2 timer - 2 PWM
- 4 UART - SPI master - I2C/I2S interface
- 10 external interrupt source - USB Interface



5.8GHz DSRC RF Transceiver

- Frequency range: 5.3GHz ~ 6GHz
- Modulation: ASK/FSK modulation
- Sensitivity Control range: -78dBm ~ -44dBm
- OBE (On-Board Equipment) speed: 0~160 Km/h
- OBE temperature range: -40°C ~ +100°C
- Temperature Compensation Circuit (TCC)
- Data rate: 128kbps ~ 1.024 Mbps
- Modulation index control: 55% ~ 95%
- Automatic Channel Search (ACS)
- RX sensitivity level control
- Programmable output power control
- TX duty ratio control



OBE



RSE



1. Radio Signal Processing Technology

- Radio Signaling Processing
- CDMA/WCDMA/WiMAX/LTE Baseband Signal Processing Technology
- Radio Channel Control Technology

2. Radio Propagation Analysis Technology for Wireless System

- Digitalized RF Technology - Radio Propagation Analysis

3. Wireless System Technology

4. IEEE802.11n WiFi Access Point for Wireless Device

5. Operating Technology of Multi-functional Complex Unit in Car

General Information

Company Name: Rahnwoo Kum / **Website:** www.airpointglobal.com
Address: #204 Miguntechnoworld II, 533-1 Yongsan-dong, Yuseong-gu, Daejeon-city, 305-500, Republic of Korea

Contacts

Name: Rahnwoo Kum / **Department:** Overseas Marketing Team
Phone(office): 82-42-484-5460 / **Fax (office):** 82-42-485-5460 / **Phone(mobile):** 82-10-5596-9655
E-mail: rahnwoo@airpointglobal.com



Description

A specialized digital map solutions provider established in 1998, HYUNDAI MNSOFT offers services in LBS and telematics to Hyundai Motor Group companies. The company developed maps for next-generation navigation systems in collaboration with Hyundai Motor Company. The company offers, in conjunction with Hyundai and Kia Motors, telematics services that apply wireless communications technology to automobiles. HYUNDAI MNSOFT seeks to acquire cutting-edge technologies, enhance in-house capabilities, and expands its LBS and telematics business to establish itself as a global vehicle information systems provider.

Business Area

1st category

- Traffic Management
 - Traffic Signal/Control • Incident Management • Traffic Information • Safe-driving Support
 - Traffic Enforcement • Parking Management
- Public Transportation
 - Bus Information/ Management System • Public Transportation Information/Management
 - Multi Modal Information/Management • Bus Rapid Transit System/Solution
 - Pedestrian/Disabled Support System
- Electronic Payment
 - Electronic Toll Collection • Electronic Parking Payment • Electronic Fare Payment
- Traffic Information Integration/Management
 - Traffic Information Integration • Traffic Information Center Traffic Data Management
- Traveler Information
 - Pre/On-Trip Traveler Information Service • Telematics Service
- **Advanced Vehicle/Highway**
 - Safe-driving Vehicle & Highway • Autonomous Driving • Drive Assistant System
- **Commercial Vehicle Operation**
 - Fleet Management System • Hazardous Freight Management • Logistics
- Others ()

2nd category

- **Hardware** ■ **Software** □ SI □ Consulting □ Others ()

Ongoing ITS Project or R&D

Digital map base ADAS(Advanced Driver Assistant System)

- ultra-high precision map for ADAS
- ADAS output system (solution)[V2V Device (After Market)] [Communication based ADAS (including V2V, V2I)]
- Developing/Producing WAVE Communications chip (cooperating with Hyundai Autron)
- Developing V2V Software
- Building LDM (Local Dynamic Map), Developing Solutions

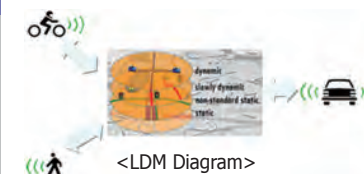
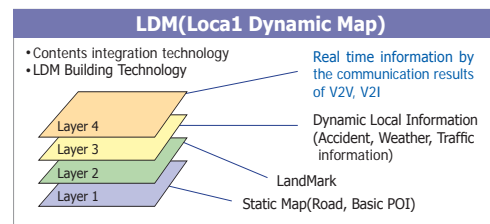
Developing Autonomous Vehicle

- Developing Autonomous vehicle related system (cooperating with Hyundai Autron)
- Processing/Analysing Big Data (Social Context Awareness, Intelligentism, etc.)
- Enhancing ultra-high precision mapping system

ETC (Patent)

- SYSTEM AND METHOD FOR PROVIDING DRIVING-PATH PRESENTATION SERVICE BY USING REAL TIME TRAFFIC INFORMATION
- System and method for partial updating keep reference data with adjacency map
- Traffic information generation system and method for intersection road considering entrance and exit
- Method of controlling home network using telematics terminal and telematics terminal for performing the same
- Car Navigation System and Method for Updating Map-Data of that
- Navigation and Method for Express Traffic Information
- LOCAL TRANSPORTATION MANAGEMENT SYSTEM

ITS Product & Technologies



※ LDM : New conceptual Spatial DB concept which contained all information (Static, Dynamic, Moving Object, etc) about the road

V2V, V2I Navi S/W

Function

- Indicating Vehicle, Pedestrian, etc.
- Alerting emergency car, hazardous car
- Alerting emergency situation ahead HUD, Navi)



General Information

Company Name: HYUNDAI MNSOFT, Inc. / **Website:** www.hyundai-mnsoft.com
Address: Address Hyundai Company Bldg., 114-38, Wonhyoro 4-ga, Yongsan-gu, Seoul 140-711, Korea

Contacts

Name: Seoli An / **Department:** Business Strategy Team
Phone(office): 82-2-3483-8411 / **Fax (office):** 82-2-3483-8600 / **Phone(mobile):** 82-10-9906-8777
E-mail: sian@hyundai-mnsoft.com



Description

eSSys is one of top OEM Automotive solution providers in Korea, We have developed ASIC Chipset for DSRC and Bluetooth application for Automotive industry. We supply OEM On Board Units for electronic toll collection (ETC) to Hyundai-KAI motor company (HKMC) & Hyundai Mobis. We used to supply DAB & DMB Modules to Samsung, GM Korea, Hyundai-Autonet. At present essays is developing Bluetooth / Wi-Fi Module for world wide market. More over we are in the stage of feasibility study of WAVE technology.

Business Area

1st category

■ **Traffic Management**

- Traffic Signal/Control • Incident Management • Traffic Information • Safe-driving Support
- Traffic Enforcement • Parking Management

□ Public Transportation

- Bus Information/ Management System • Public Transportation Information/Management
- Multi Modal Information/Management • Bus Rapid Transit System/Solution
- Pedestrian/Disabled Support System

■ **Electronic Payment**

- Electronic Toll Collection • Electronic Parking Payment • Electronic Fare Payment

□ Traffic Information Integration/Management

- Traffic Information Integration • Traffic Information Center Traffic Data Management

□ Traveler Information

- Pre/On-Trip Traveler Information Service • Telematics Service

■ **Advanced Vehicle/Highway**

- Safe-driving Vehicle & Highway • Autonomous Driving • Drive Assistant System

□ Commercial Vehicle Operation

- Fleet Management System • Hazardous Freight Management • Logistics

□ Others ()

2nd category

- **Hardware** ■ **Software** □ SI □ Consulting □ Others ()

Ongoing ITS Project or R&D

- On Board Units (OBU) for electronic toll collection (ETC) for before market application in Korea.
- Road Side Equipment for electronic toll collection (ETC) for testing ETC OBU in Korea.
- CUBIS-T (Telematics unit for before market application in Korea)
- Bluetooth and WI-FI combo module for before market application.
- DAB module for before market application in European Union.
- Feasibility evaluation of WAVE technology.

ETC (Patent)

Certification

- KODIT Partner • INNO-BIZ Company • Certificated MQRS from Hyundai-Mobis.
- Certificated SQ (Supplier Qualification) from Hyundai-KIA Motor company.

Prize

- received innovation company in foundation field at the 2008 Awards (President of Korea)
- received the best venture company at the 2008 Awards (Small and Medium Business Administration)

Patent

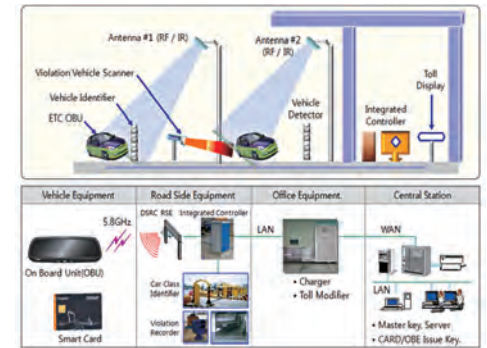
- The methode of vehicle control using V.I.N
- Video system using network commination with image compression.

ITS Product & Technologies

| **Product Offerings** |



| **Technologies** |



General Information

Company Name: eSSys,.Co.Ltd / **Website:** www.essys.co.kr
Address: Daerung post tower 5 15F, 60-3 Gasan-dong, Geumcheon-gu, Seoul, Korea

Contacts

Name: James Kim / **Department:** R&D
Phone(office): 82-2-850-9641 / **Fax (office):** 82-2-850-0582 / **Phone(mobile):**
E-mail: ygkim@essys.co.kr



Description

DBMS vendor that provides the best database software in Korea
 TIBERO Co., Ltd. (hereafter TIBERO) is a DBMS vendor that researches and develops data-related core technologies and data-based technologies. In 2003, TIBERO successfully launched its own DBMS product 'Tibero' to commercialize the large DBMS in Korea, and has become one of the leading companies in the domestic DBMS market. In 2008, TIBERO developed 'Tibero Active Cluster (TAC),' which is a shared DB cluster technology. It was the first time in Korea, and the second in the world. TAC exhibits stability and high performance enough to replace DBMS products of other global companies.

In October 2011, TIBERO strengthened its product competitiveness by launching a new DBMS product 'Tibero 5' which had been designed to be used as the core system of a large business system. The product can be applied to not only a unit business system but also a core business system or an enterprise system. Gradually upgrading technology, TIBERO now leads the domestic DBMS market with its competitive products that display outstanding performance, stability, and distinctive technical support.

TIBERO has made efforts and passion in developing new database technology and products to meet the needs of the market and customers. As the result, TIBERO has grown as Korea's leading DB service company with high quality products and original technology which can compete with foreign products.

Business Area

1st category

- Traffic Management
 - Traffic Signal/Control • Incident Management • Traffic Information • Safe-driving Support
 - Traffic Enforcement • Parking Management
- Public Transportation
 - Bus Information/ Management System • Public Transportation Information/Management
 - Multi Modal Information/Management • Bus Rapid Transit System/Solution
 - Pedestrian/Disabled Support System
- Electronic Payment
 - Electronic Toll Collection • Electronic Parking Payment • Electronic Fare Payment
- Traffic Information Integration/Management
 - Traffic Information Integration • Traffic Information Center Traffic Data Management
- Traveler Information
 - Pre/On-Trip Traveler Information Service • Telematics Service
- Advanced Vehicle/Highway
 - Safe-driving Vehicle & Highway • Autonomous Driving • Drive Assistant System
- Commercial Vehicle Operation
 - Fleet Management System • Hazardous Freight Management • Logistics
- Others ()

2nd category

- Hardware ■ Software □ SI □ Consulting □ Others ()

Ongoing ITS Project or R&D

- Namyangju City Hall - Bus Information System (BIS) building for Namyangju-Gapyeong-Chuncheon International Airport Corporation - U-Signage replacement and installation business
- Yangsan/Uijeongbu/Uiwang/Namyangju/Gunpo City Hall - Urban Traffic Information System (UTIS) building
- Daegu Metropolitan Transit Corporation - System building for the line no. 3
- Gyeonggi-do Gwangju City Hall - UTIS building
- Gumi City Hall - BIS building
- Busan-Gimhae Light Rail Transit Corporation - Automated Fare Collection (AFC) system building
- Gwangju Metropolitan City Hall - BIS building
- Korea Institute of Construction Technology - 5th Transport Advice on GOing anywhere (TAGO) system building
- Metropolitan Transport Association - Intelligent Transport System (ITS) building for Seoul-Hanam as part of the Bus Rapid Transit (BRT) pilot project
- Ministry of Land, Transport and Maritime Affairs - BIS building for the southeastern part of the capital area
- Yongin City Hall - ITS building
- Korea Express Corporation - TCS server adoption for business/branch offices
- Busan Metropolitan City Hall - ITS building
- Tongyeong City Hall - Bus Management System (BMS) building

ETC (Patent)

Certification

- Tibero RDBMS proved its stability and performance by gaining GS certificate from Telecommunication Technology Association (TTA) and gained 'Open GIS' certificate, the international GIS standards, from OGC (Open Geospatial Consortium) for the first time in the domestic DBMS market.
 - GS (Good Software) Certificate Statue
 - ▶ Tibero RDBMS 3.0 Certificate (Code: 07-0166, October of 2007)
 - ▶ Tibero RDBMS 4 Certificate (Code: 09-0208, November of 2009)
 - Open Geospatial Consortium Certificate Statue
 - ▶ Spec. : OpenGIS® Simple Features Specification for SQL, Revision 1.1, Types and Functions Alternative

Major Awards

- Oct. 2010 Award of DB Solution Innovator
- Dec. 2008 Korea Software Technology Excellence Award
- Nov. 2008 New technology-Excellent IT product Presentation selected by public Institutions Won the best product Award

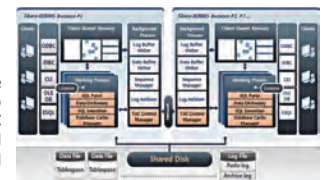
ITS Product & Technologies

Product Offerings |

TIBERO RDBMS
 - Maximizes performance of processing increasing multiple users with a multi-process and multi-thread based architecture and the latest methodology for efficient resource management.

| Technologies |

High Availability
 Tibero RDBMS supports Tibero Active Cluster (TAC), which corresponds to Oracle RAC, for its high availability. TAC guarantees stable system operation and convenient scalability with cluster-related functions including the failover function.



General Information

Company Name: TIBERO Co., Ltd. / **Website:** www.tibero.com
Address: 3F Tmax Building, 272-6, Seohyeon-dong, Bundang-gu, Seongnam-si, Gyeonggi-do, Korea (463-824)

Contacts

Name: Rahnwoo Kum / **Department:** Marketing Dept.
Phone(office): 82-31-779-7113 / **Fax (office):** 82-31-779-7119 / **Phone(mobile):** 82-10-9054-4888
E-mail: kenshin@tibero.com

